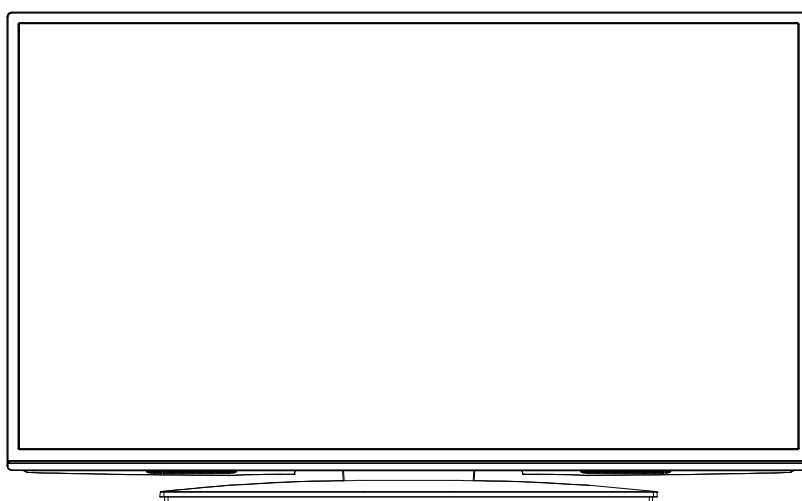


ORION

TV39LB139S

SERVICE MANUAL

LCD/LED-TV



ORIGINAL
CHASSIS CODE A

SERVICING NOTICES ON CHECKING

1. KEEP THE NOTICES


As for the places which need special attentions, they are indicated with the labels or seals on the cabinet, chassis and parts. Make sure to keep the indications and notices in the operation manual.

2. AVOID AN ELECTRIC SHOCK

There is a high voltage part inside. Avoid an electric shock while the electric current is flowing.

3. USE THE DESIGNATED PARTS

The parts in this equipment have the specific characters of incombustibility and withstand voltage for safety. Therefore, the part which is replaced should be used the part which has the same character.

Especially as to the important parts for safety which is indicated in the circuit diagram or the table of parts as a  mark, the designated parts must be used.

4. BE CAREFUL WITH THE LCD PANEL

Avoid a shock to the panel while servicing. Take enough care to deal with it.

5. PUT PARTS AND WIRES IN THE ORIGINAL POSITION AFTER ASSEMBLING OR WIRING

There are parts which use the insulation material such as a tube or tape for safety, or which are assembled in the condition that these do not contact with the printed board. The inside wiring is designed not to get closer to the pyrogenic parts and high voltage parts. Therefore, put these parts in the original positions.

6. PERFORM A SAFETY CHECK AFTER SERVICING

Confirm that the screws, parts and wiring which were removed in order to service are put in the original positions, or whether there are the portions which are deteriorated around the serviced places serviced or not. Check the insulation between the antenna terminal or external metal and the AC cord plug blades. And be sure the safety of that.

(INSULATION CHECK PROCEDURE)

1. Unplug the plug from the AC outlet.
2. Remove the antenna terminal on TV and turn on the TV.
3. Insulation resistance between the cord plug terminals and the external exposure metal **[Note 2]** should be more than 1M ohm by using the 500V insulation resistance meter **[Note 1]**.
4. If the insulation resistance is less than 1M ohm, the inspection repair should be required.

[Note 1]

If you have not the 500V insulation resistance meter, use a Tester.

[Note 2]

External exposure metal: Antenna terminal
Headphone jack

HOW TO ORDER PARTS

Please include the following informations when you order parts. (Particularly the CHASSIS CODE.)

1. MODEL NUMBER and CHASSIS CODE
YOU can find it in the back of your unit.
2. PART NO. and DESCRIPTION
You can find it in your SERVICE MANUAL.

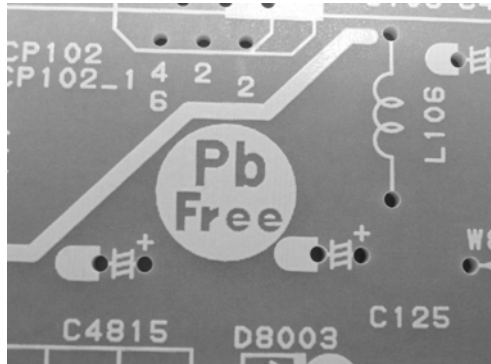
IMPORTANT

When you exchange IC and Transistor with a heat sink, apply silicon grease (YG6260M) on the contact section of the heat sink. Before applying new silicon grease, remove all the old silicon grease. (Old grease may cause damage to the IC and Transistor).

ABOUT LEAD FREE SOLDER (PbF)

Distinction of PbF PCB:

PCB's (manufactured) using lead free solder will have a PbF printing on the PCB.
(Please refer to figures.)



Caution:

- Pb free solder has a higher melting point than standard solder;
Typically the melting point is 86°F~104°F(30°C~40°C) higher.
Please use a soldering iron with temperature control and adjust it to 650°F ± 20°F (350°C ± 10°C).
In case of using high temperature soldering iron, please be careful not to heat too long.
- Pb free solder will tend to splash when heated too high (about 1100°F/ 600°C).
- All products with the printed circuit board with PbF printing must be serviced with lead free solder.
When soldering or unsoldering, completely remove all of the solder from the pins or solder area,
and be sure to heat the soldering points with the lead free solder until it melts sufficiently.

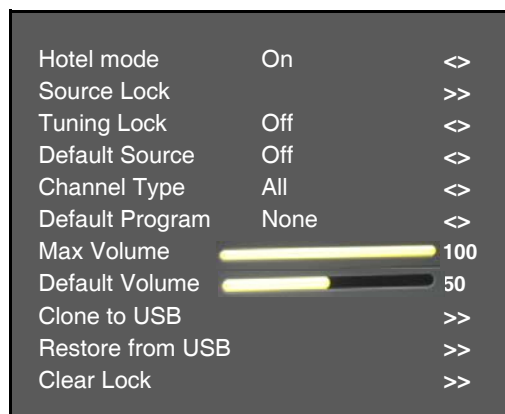
Recommendations

Recommended lead free solder composition is Sn-3.0Ag-0.5Cu.

HOTEL MODE FUNCTION

To set the Hotel mode, please follow the steps below.

1. Press the SETUP/MENU ---> 1147 button on the remote control.
2. Press the DOWN button on the remote control,
3. Select the "Setup" menu , then press ENTER button.
4. Select the "Hotel Mode" menu, Select "On".
5. The Hotel mode setting menu will appear.
6. Using the UP/DOWN button on the remote control, select the desired mode. Then press the ENTER button.
7. Using the LEFT/RIGHT button on the remote control, set the mode to desired setting.
8. The Hotel mode has now been set up.



To reset the Hotel mode, please follow the steps below.

1. Press the SETUP/MENU ---> 1147 button on the remote control.
2. Press the DOWN button on the remote control,
3. Select the "Setup" menu , then press ENTER button.
4. Select the "Hotel Mode" menu, Select "On".
5. The Hotel mode setting menu will appear.
6. Press the DOWN button on the remote control,
7. Select the "Clear Lock" menu, then press ENTER button.
8. The setting items has now been returned to initial value.

Setting item	Setting value	Initial value	FUNCTION
Source Lock	ANTENNA/CABLE/ SATELLITE/AV COMPONENT/ HDMI/DVD/USB	---	Setting Input skip, combine with "Default Source".
Tunning Lock	OFF/ON	OFF	Setting of the tunning Lock. When turn on "Tuning lock", User cannot choose the following item in MENU. (skip an item and not available.) Tuner Mode, Channels, Satellite Setup, First time installation, Reset Default, Clean All
Default Source	OFF/ANTENNA/CABLE/ SATELLITE/AV COMPONENT/ HDMI/DVD/USB	OFF	Setting Input Source, combine with "Source Lock" If select "Source Lock" for this function disappear.
Channel Type	ALL/DIGITAL/RADIO/ ANALOGUE	ALL	Setting of the CH if select "Default Source" to ALL/ ANTENNA/CABLE/SATELLITE input.
Default Program	NONE/1/2/3/.../197	NONE	Setting of the CH if select "Default Source" to ANTENNA/ CABLE/SATELLITE input.
Max volume	0~100	100	Setting of the maximum volume value.
Default Volume	0~100	50	Setting volume at Power on.
Clone to USB	---	---	Copy to USB about User Menu setting, Hotel Mode setting and stored channels.
Restore from USB	---	---	Read and Restore data from USB that is saved by Cone to USB.
Clear Lock	---	---	Setting of the Hotel Mode return factory setting.

TABLE OF CONTENTS

SERVICING NOTICES ON CHECKING.....	A1-1
HOW TO ORDER PARTS.....	A1-1
IMPORTANT.....	A1-1
ABOUT LEAD FREE SOLDER (PbF).....	A1-2
HOTEL MODE FUNCTION.....	A1-3
TABLE OF CONTENTS.....	A2-1
GENERAL SPECIFICATIONS.....	A3-1~A3-5
DISASSEMBLY INSTRUCTIONS	
1. REMOVAL OF MECHANICAL PARTS AND P. C. BOARDS.....	B1-1, B1-2
2. REMOVAL AND INSTALLATION OF FLAT PACKAGE IC.....	B2-1, B2-2
SERVICE MODE LIST	C-1
ELECTRICAL ADJUSTMENTS	D-1, D-2
BLOCK DIAGRAM	E-1, E-2
PRINTED CIRCUIT BOARDS	
POWER	F-1, F-2
OPERATION/REMOCON	F-3, F-4
SCHEMATIC DIAGRAMS	
POWER.....	G-1, G-2
BACKLIGHT INVERTER.....	G-3, G-4
OPERATION/REMOCON.....	G-5, G-6
INTERCONNECTION DIAGRAM	G-7, G-8
WAVEFORMS	H-1
MECHANICAL EXPLODED VIEWS	I-1, I-2
MECHANICAL REPLACEMENT PARTS LIST	J1-1
ELECTRICAL REPLACEMENT PARTS LIST	J2-1

GENERAL SPECIFICATIONS

G-1	TV System	LCD	LCD Size / Visual Size	38.57 inch / 979.7mmV
			LCD Type	Color TFT LCD
			Number of Pixels	1920(H) x 1080(V)
			Double Scan	No
			View Range	88/88 degree
			Left/Right Up/Down	88/88 degree
			Bright Dot	n≤2
G-2	Tuning System		Zero Bright Dot Ratio	70% above
		Color System		PAL / SECAM
		Speaker		2 Speaker
			Position	Bottom
			Size	1.6 x 4.8 inch
			Impedance	8 ohm
		Sound Output	MAX	10W + 10W
			10%(Typical)	---
		NTSC3.58+4.43 / PAL60Hz		Yes
		Broadcasting System	Analog	PAL(B/
			Digital	DVB-T
		Tuner and Receive CH	System	2Tuner (Analog+DVB-T/C, DVB-S/S2)
		CH Coverage	Destination	UK, I.R., CCIR Hyper+France CATV
			Analog	45.75~858MHz
G-3	Power		Digital (Air, Cable)	E2~E69
			Digital (Satellite)	950~2150MHz
		Intermediate Frequency	Analog	BG / II
			Picture(FP)	38.9 / 38.9 / 38.9MHz
			Sound(FS)	33.4 / 32.9 / 32.4MHz
			FP-FS	5.5 / 6.0 / 6.5MHz
			Digital	DVB-T
		Auto Tuning Method		ALL Band (Not C.C.I.R. CH Plan)
		Preset CH		4000 Service in total of Analog and Digital.
		Stereo/Dual TV Sound		Nicam/A2 Dual
		Tuner Sound Muting		Yes
		Power Source	AC	220-240V AC 50Hz
			DC	---
		Power Consumption	at AC at DC	90 W at AC 230 V 50 Hz
G-4	Regulation	Stand by (at AC)	w/ EPG Timer	--
			w/o EPG Timer	--
			Per Year	0.29 W at AC 230 V 50 Hz
				-- kWh/Year
		Protector	Power Fuse	Yes
			Safety	CE(EN60065:2002+AMD.11:2008)
			Radiation	CE
			X-Radiation	---
			Operation	+5°C ~ +40°C
			Storage	-20°C ~ +60°C
			Space Around Unit	100mm (4inch)
				Less than 80% RH
				English, Spanish, German, French, Italian, Swedish
				Dutch, Russian, Portuguese, Turkish, Greek, Finnish
G-5	Temperature			Hungarian, Polish, Danish, Norwegian, Czech, Slovak
		Sleep Timer	Max Time	120 Min
			Step	10 / 20 / 30 / 40 / 50 / 60 / 90 / 120 Min
		On/Off Timer	Program(On Timer / Off Timer)	1 Program / 1 Program
		Timer Back-up (at Power Off Mode)	more than	-- Min Sec
		EPG Timer Events		--
		Unit		RC-UE
		Glow in Dark Remocon		No
		Remocon Format		ORION
		Format		NEC
		Custom Code		71-8E h
		Power Source	Voltage(D.C)	3V
			UM size x pcs	UM-4 x 2 pcs
		Total Keys		48 Keys
G-6	Operating Humidity	Keys	Power (Stand By)	Yes
			Information	Yes
			Audio I / II	Yes
			1	Yes
			2	Yes
			3	Yes
			4	Yes
			5	Yes
			6	Yes
			7	Yes
			8	Yes
			9	Yes
			0	Yes
			Input Select	Yes
G-7	OSD Language		Guide(EPG)	Yes
			Menu	Yes
			Return	Yes
			Enter / CH List	Yes
			↑	Yes
			↓	Yes
			←	Yes
G-8	Clock and Timer			
G-9	Remote Control			

GENERAL SPECIFICATIONS

		←	Yes
		Mute	Yes
		Picture Size	Yes
		Volume Up	Yes
		Volume Down	Yes
		TV	Yes
		MEDIA	Yes
		Freeze	Yes
		Quick View	Yes
		Play	Yes
		Stop	Yes
		Pause	Yes
		Play Mode / Rec List	Yes
		Rec	Yes
		T-Rec	Yes
	TEXT Keys	Subtitle	Yes
		CH Up / Page Up	Yes
		CH Down / Page Down	Yes
		Skip- / Subpage	Yes
		Search- / Hold	Yes
		Search+ / F.T.B.	Yes
		Skip+ / Reveal	Yes
		Teletext	Yes
		Red	Yes
		Green	Yes
		Yellow	Yes
		Cyan	Yes
G-10	Features	Power On Memory	Yes
		Auto Shut Off	Yes
		Just Clock Function	No
		Game Position	No
		DNR	Yes
			3D
		Comb Filter	Yes
			3D
		Auto Set Up (Fast installation)	Language
			Country
			TV Location
			Auto Power Off
			E-POP Demo
			No
			Tuner Mode
			Yes
			Auto Tuning (Analog/Digital)
			Yes
			CH sort
			ATS
			Yes
			Auto clock (Digital tuner)
			Yes
			Plug in start
			Yes
	Picture Setting(TV)		Picture Mode
			Yes
			Brightness , Contrast , Color
			Yes
			Tint
			Yes
			Sharpness
			Yes
			DNR
			Yes
			Color Temperature
			Yes
			Backlight Control
			Yes
			MPEG NR
			Yes
			DBC (Dynamic Backlight Control)
			No
			Film Mode
			No
	Picture Setting(PC)		Picture Mode
			Yes
			Brightness , Contrast , Color
			Yes
			HOR POSITION , VER POSITION
			Yes
			PHASE , CLOCK
			Yes
			AUTO ADJUST
			Yes
			RED , GREEN , BLUE
			No
			DNR
			No
			Color Temperature
			Yes
			Backlight
			Yes
			WXGA INPUT
			No
			WVGA INPUT
			No
	Audio		Sound Mode
			No
			Tone Control (Bass/Treble/Balance)
			Yes
			Surround
			Yes
			Equalizer
			Yes
			Speaker
			No
			Stable Sound
			Yes
			BBE
			No
			SRS WOW (SRS 3D/Focus/Tru Bass)
			No
			Variable Audio Out
			No
	Tuning		Auto Tuning (Analog/Digital)
			Yes
			Manual Tuning (Analog/Digital)
			Yes
			Update Scan (Analog/Digital)
			No
			TV Connection
			Yes
			CH Skip (Analog/Digital)
			Yes
			CH Sort (Analog/Digital)
			Yes
			CH Edit (Analog/Digital)
			Yes
			Clean CH List (Analog/Digital)
			Yes

GENERAL SPECIFICATIONS

		Fine Tuning (Analog)	Yes
Lock		System Lock	Yes
		Channel Lock	Yes
		Parental Lock (Digital)	Yes
		Hotel Lock	Yes
		USB Clone (Hotel Lock)	Yes
Screen Saver		Inversion	No
		Full White	No
		Screen Saver	No
		Static Image	No
T'Text			Yes
		Text type	Fastext / Toptext
		Text Language	English, German, Swedish, Finnish, Hungarian, Italian, French, Portuguese, Spanish, Czech, Slovak, Polish, Estonian, Lettish, Lithuanian, Slovenian, Rumanian, Russian, Ukrainian, Turkish, Greek, Hebrew, Farisi Arabic, Danish, Flemish, Icelandic, Byelorussian
Text and Picture			No
PVR		Timeshift	No
		Timer Recording	No
		EPG Recording	No
USB Media Player	Photo		JPEG (.jpg/.jpeg), BMP (.bmp), PNG (.png)
	Music		MP3 (.mp3), WAVE (.wav), AAC-LC (.m4a) HE-AAC (.m4a), MPEG1 (.mp2), MPEG4 (.m4a)
	Video	Container	AVI (.avi), MKV (.mkv), MP4 (.mp4/.m4v), PS (.mpg/.mpeg), TS (.ts/.tp/.trp), VOB (.vob)
		Video Codec	Xvid, MPEG1, MPEG2, MPEG4 SP/ASP, H.264 MJPEG
		Audio Codec	MPEG1, MPEG2, MPEG4, MP3, AAC, AAC-LC HE-AAC, PCM/ADPCM, AC3
		DivX DMF Support	No
	Text		Text (.txt)
Internet		Hbb TV	No
		BBC iPLAYER	No
Wide Mode (AUTO/4:3/16:9/Zoom1/Zoom2/1:1)			Yes
CH Label			Yes
Reset TV Setting			Yes
HD Zoom			Yes
Picture Scroll (Vertical Position)			No
PFC(Power Factor circuit)			No
Freeze frame			Yes
Plug and Play			No
Power Management			Yes
Hearing Impaired			Yes
Audio Description			Yes
Power On LED			No
HDMI Mode			Yes
PC Mode			Yes
Blue Back			Yes
Scart Spec	Scart1	AV in	Yes
		AV out	Yes (A.Tuner/D.Tuner)
		S-Video in	Yes
		RGB in	Yes
	Scart2	AV in	No
		AV out	No
		S-Video in	No
		RGB in	No
Digital Text (VBI teletext)			Yes
MHEG-5			Yes
MHP			No
EPG (BBC type 8Days Digital tuner only)			Yes
OAD (Over Air Download)			Yes
CI+			Yes
Common Interface (Digital tuner only)			Yes
Rec Screen Status			No
Ch sorting based on Ch List (Digital/Germany only)			Yes
Rename Carrier (Digital)			No
Edit Event Timer			No
Software Update via CI Slot			No
Preference Language (Audio/Subtitle/Digital Service)(Digital)			Yes
DVB Subtitle (Digital)			Yes
Clock			Yes
DST			No
Signal Status			Yes
Digital Out		Dolby Digital	Dolby Digital
		Dolby Digital Plus	Dolby Digital
		MPEG	PCM
		HE AAC	PCM
Decode(Down Mix)		Dolby Digital	Yes
		Dolby Digital Plus	Yes
		MPEG	Yes
		HE AAC	Yes
PC Monitor Input			Yes

GENERAL SPECIFICATIONS

		VGA (640x480)	Yes (60Hz)
		VGA (720x400)	No (Possible to Display)
		WVGA (848x480)	No
		SVGA (800x600)	Yes (60Hz)
		XGA (1024x768)	Yes (60Hz)
		WXGA (1280x768)	Yes (60Hz)
		WXGA (1280x720)	Yes (60Hz)
		WXGA (1360x768)	Yes (60Hz)
		SXGA (1280x1024)	Yes (60Hz)
		WXGA+ (1440x900)	Yes (60Hz)
		WSXGA+ (1680x1050)	No (Possible to Display)
		FULL HD (1920x1080)	Yes (60Hz)
	HDMI Input		Yes
		VGA (640x480)	Yes (60Hz)
		VGA (720x400)	No (Possible to Display)
		WVGA (848x480)	No
		SVGA (800x600)	Yes (60Hz)
		XGA (1024x768)	Yes (60Hz)
		WXGA (1280x768)	Yes (60Hz)
		WXGA (1280x720)	Yes (60Hz)
		WXGA (1360x768)	Yes (60Hz)
		SXGA (1280x1024)	Yes (60Hz)
		WXGA+ (1440x900)	Yes (60Hz)
		WSXGA+ (1680x1050)	No (Possible to Display)
		FULL HD (1920x1080)	Yes (60Hz)
		720x480i (4:3)	Yes (60Hz)
		720x480i (16:9)	Yes (60Hz)
		720x480p (4:3)	Yes (60Hz)
		720x480p (16:9)	Yes (60Hz)
		720x576i (4:3)	Yes (50Hz)
		720x576i (16:9)	Yes (50Hz)
		720x576p (4:3)	Yes (50Hz)
		720x576p (16:9)	Yes (50Hz)
		1280x720p	Yes (50/60Hz)
		1920x1080i	Yes (50/60Hz)
		1920x1080p	Yes (24/50/60Hz)
		CEC(ORION Standard)	No
		Deep Color	No
		xvYCC	No
	Component Input		Yes
		720x480i (4:3)	Yes (60Hz)
		720x480i (16:9)	Yes (60Hz)
		720x480p (4:3)	Yes (60Hz)
		720x480p (16:9)	Yes (60Hz)
		720x576i (4:3)	Yes (50Hz)
		720x576i (16:9)	Yes (50Hz)
		720x576p (4:3)	Yes (50Hz)
		720x576p (16:9)	Yes (50Hz)
		1280x720p	Yes (50/60Hz)
		1920x1080i	Yes (50/60Hz)
		1920x1080p	No (Possible to Display)
	Wall Mount	Size W x H(mm)	Yes (100 x 200)
		Screw Size	M6 x 10
	Stand	Tilt	No
		Swivel	No
G-11	Accessories	Owner's Manual	Language w/Guarantee Card
			English/German/French/Polish Yes (except English)
		Remote Control Unit	Yes
		Rod Antenna	No
			Poles
			Terminal
			-
			-
		Loop Antenna (W/ Antenna Change Plug)	No
			Terminal
			-
		DVB-T Antenna	No
		U/V Mixer	No
		DC Car Cord (Center+)	No
		Guarantee Card	No
		Warning Sheet	No
		Circuit Diagram	No
		Antenna Change Plug	No
		Service Facility List	No
		Important Safeguard	No
		Quick Set-up Sheet	No
		Battery	Yes
			UM size x pcs
			OEM Brand
			No
		AC Adapter	No
		AC Cord (for AC Adapter)	No
		AC Cord	No
		AV Cord (2Pin-1Pin)	No
		INFORMATION SHEET(21PIN CABLE)	No
		HDMI-DVI Cable	No
		3 in 1Mini Pin Cable (Y/Pb/Pr)	Yes
		3 in 1Mini Pin Cable (CVBS/AudioL, R)	Yes

GENERAL SPECIFICATIONS

				Registration Card	No	
				300 ohm to 75 ohm Antenna Adapter	No	
				Stand Screw	Yes (4pcs)	
				Stand Screw(Prevent?Of Set Fall Down)	No	
				Stand	Yes	
				Frame Stand	No	
G-12	Interface	Switch	Side	Power	Yes	
				System Select	No	
				Main Power SW	No	
				Channel Up / Menu Up	Yes	
				Channel Down / Menu Down	Yes	
				Volume Up / Menu >	Yes	
				Volume Down / Menu <	Yes	
				Menu	No ("Vol-"+"Vol+" 1sec)	
				Play	No	
				Stop	No	
				Eject	No	
				Input Select/Enter	Yes	
		Indicator	Power/Stand-by	Yes (Green / Red)		
			On Timer	No		
		Terminals	Side	Video/Audio Input 1	Mini Pin Jack(φ3.5, CVBS, Audio Input L/R)	
				S- Input 1	No	
				Video/Audio Input 2	No	
				S- Input 2	No	
				Video Output	No	
				Audio Output	No	
				Euro Scart (21Pin)	No	
				Component In	Mini Pin Jack(φ3.5, Y/Pb/Pr)	
				Audio Input (Component In use)	Composite Audio Input Alternative	
				HDMI Input 1	Yes	
				Audio Input (HDMI/DVI In use)	PC Monitor Audio Input Alternative	
				USB (Media)	Yes	
				Sub Woofer Output	No	
				Diversity	No	
				Ext Speaker	No	
				DC Jack 12V(Center +)	No	
				VHF/UHF Antenna Input	F Type (DVB-S, S2)	
				Headphone	Yes	
				CI Card Slot	Yes	
				AC Inlet	No	
				Rear	Euro Scart (21Pin)	Yes
					VHF/UHF Antenna Input	DIN Type (Analog, DVB-T, C)
					Digital Audio Out (Coaxial)	Yes
					HDMI Input 2	Yes
					Audio Input (HDMI/DVI In use)	No
					HDMI Input 3	Yes
					Audio Input (HDMI/DVI In use)	No
					PC Monitor Input (D-Sub)	Yes
					Audio Input	Mini Pin Jack(φ3.5), STEREO
G-13	Set Size			Approx. W x D x H (mm)	888 x 232 x 563.2	
				w/o Stand,Handle Approx. W x D x H (mm)	888 x 68.8 x 531.4	
G-14	Weight			Net Approx.	10.2kg (22.5lbs)	
				Net w/o Stand,Handle Approx.	8.7kg (19.2lbs)	
				Gross Approx.	12.7kg (28.0lbs)	
				Gross w/Master Carton (Approx.)	--- kg (--- lbs)	
G-15	Carton	Master Carton			No	
				Content	---- Sets	
				Material	-- /--	
				Dimensions W x D x H(mm)	-- x -- x --	
				Description of Origin	No	
		Gift Box			Yes	
				Material	Double/Full color(HQP)	
				Dimensions W x D x H(mm)	991 x 135 x 625	
				Design	As per Buyer's	
				Description of Origin	No	
		Drop Test			Natural Dropping At 1 Corner / 3 Edges / 6 Surfaces	
				Height (cm)	62	
		Container Stuffing			594 Sets/45' Trailer	
		w/Pallet			Yes	
		w/Wrapping			Yes	
G-16	Material	Cabinet	Cabinet Front		PC+ABS 94V0 NON-HALOGEN	
			Cabinet Rear		PS 94V0 NON-DECABROM	
			Speaker Box		PS 94V0 NON-DECABROM	
			Stand		PC+ABS 94V0 NON-HALOGEN	
		PCB	Non-Halogen		No	
			Eyelet		Yes	
G-17	Environment	Environmental standard requirement			Green procurement of ORION	
		Pb- Free			Phase3(PHASE3A)	
		Measures for Whisker			Yes	
		WEEE			Yes	

DISASSEMBLY INSTRUCTIONS

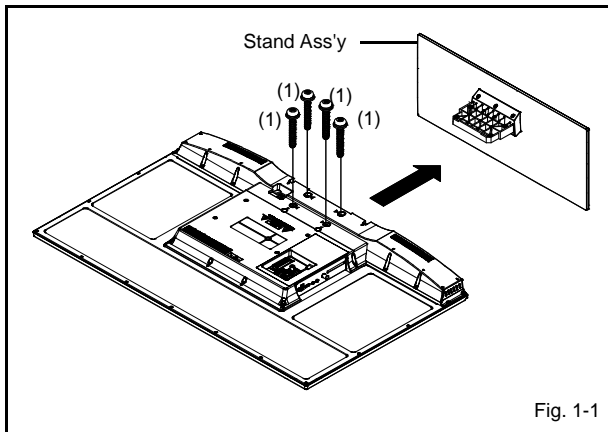
1. REMOVAL OF MECHANICAL PARTS AND P.C. BOARDS

CAUTION

Be careful not to remove the LVDS cable forcibly, because the LVDS cable may be damaged.

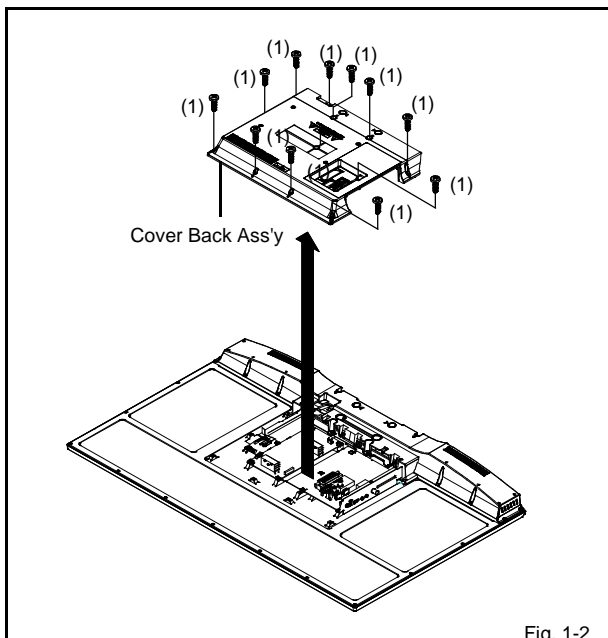
1-1: STAND ASS'Y (Refer to Fig. 1-1)

1. Remove the 4 screws (1).
2. Remove the Stand Ass'y in the direction of arrow.



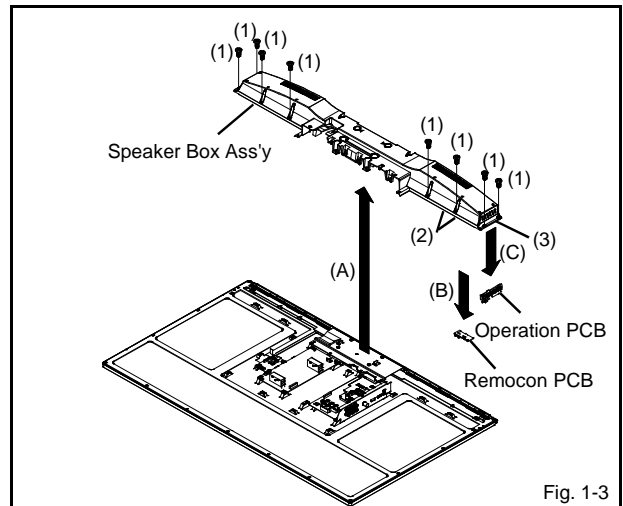
1-2: COVER BACK ASS'Y (Refer to Fig. 1-2)

1. Remove the 11 screws (1).
2. Remove the Cover Back Ass'y in the direction of arrow.



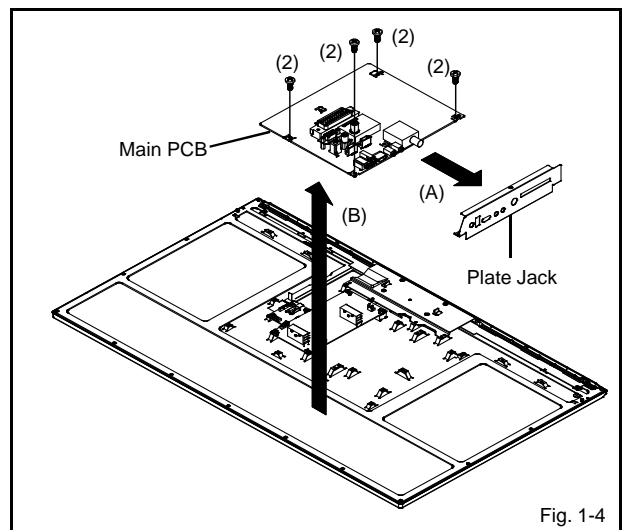
1-3: SPEAKER BOX ASSY, REMOCON PCB and OPERATION PCB (Refer to Fig. 1-3)

1. Remove the 8 screws (1)
2. Disconnect the following connectors: **(CD301, CD2201 and CD2202).**
3. Remove the Speaker Box Ass'y in the direction of arrow (A).
4. Unlock the 2 supports (2)
5. Remove the Remocon PCB in the direction of arrow (B).
6. Unlock the support (3)
7. Remove the Operation PCB in the direction of arrow (C).



1-4: MAIN PCB (Refer to Fig. 1-4)

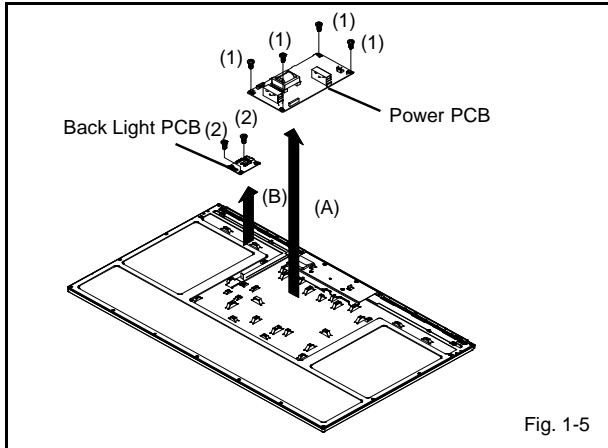
1. Remove the 4 screws (1)
2. Remove the 4 screws (2)
3. Disconnect the following connectors: **(CD502 and CD2801).**
4. Remove the Plate Jack in the direction of arrow (A).
5. Remove the Main PCB in the direction of arrow (B).



DISASSEMBLY INSTRUCTIONS

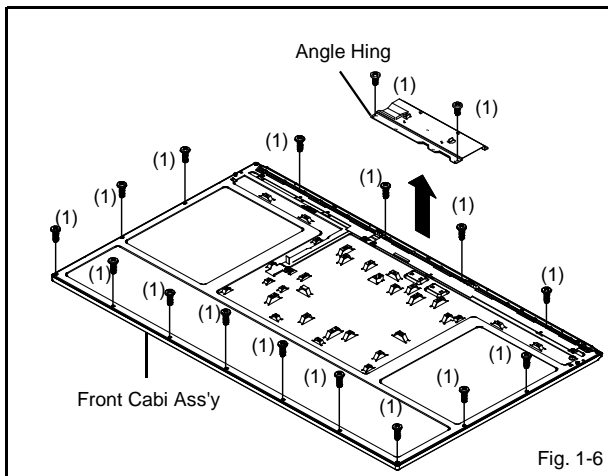
1-5: POWER PCB and BACK LIGHT PCB (Refer to Fig. 1-5)

1. Remove the 4 screws (1)
2. Disconnect the following connectors:
(CD503, CP7002 and CP7003).
3. Remove the POWER PCB in the direction of arrow (A).
4. Remove the 2 screws (2)
5. Remove the Back Light PCB in the direction of arrow (B).



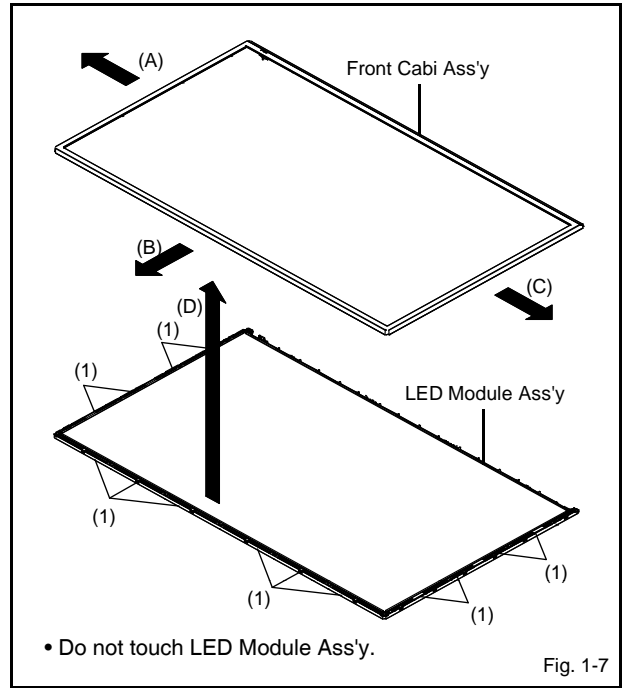
1-6: ANGLE HING (Refer to Fig. 1-6)

1. Remove the 17 screws (1).
2. Remove the Angle Hing in the direction of arrow.



1-7: LED MODULE ASS'Y (Refer to Fig. 1-7)

1. Unlock the 14 supports (1).
2. Remove the LED Module Ass'y in the direction of arrow (A) -> (B) -> (C) -> (D), Please remove carefully and slowly.



DISASSEMBLY INSTRUCTIONS

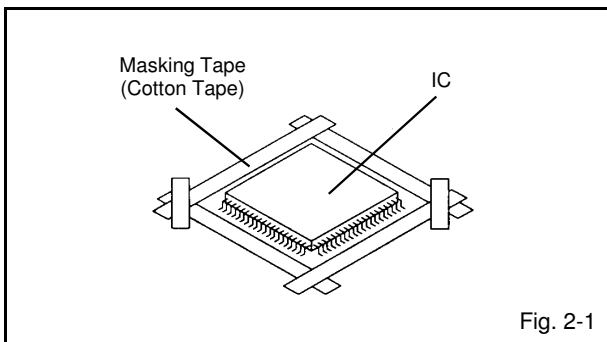
2. REMOVAL AND INSTALLATION OF FLAT PACKAGE IC

REMOVAL

1. Put Masking Tape (cotton tape) around the Flat Package IC to protect other parts from any damage. **(Refer to Fig. 2-1.)**

NOTE

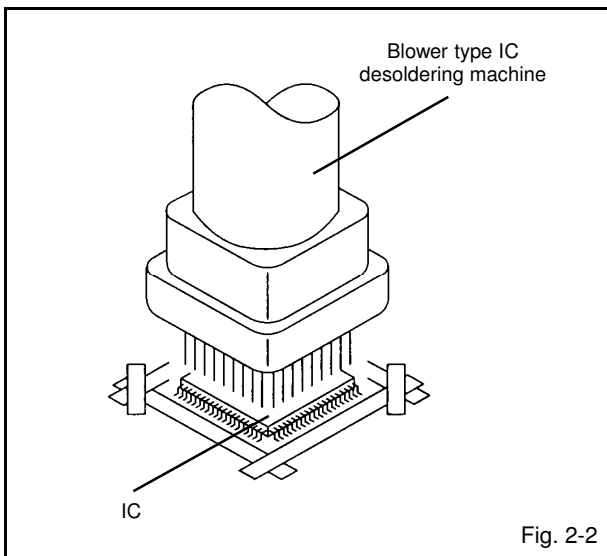
Masking is carried out on all the parts located within 10 mm distance from IC leads.



2. Heat the IC leads using a blower type IC desoldering machine. **(Refer to Fig. 2-2.)**

NOTE

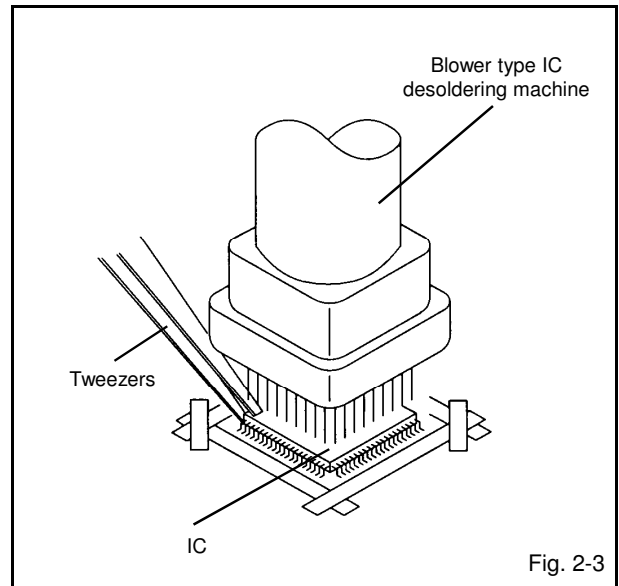
Do not rotate or move the IC back and forth, until IC can move back and forth easily after desoldering the leads completely.



3. When IC starts moving back and forth easily after desoldering completely, pickup the corner of the IC using tweezers and remove the IC by moving with the IC desoldering machine. **(Refer to Fig. 2-3.)**

NOTE

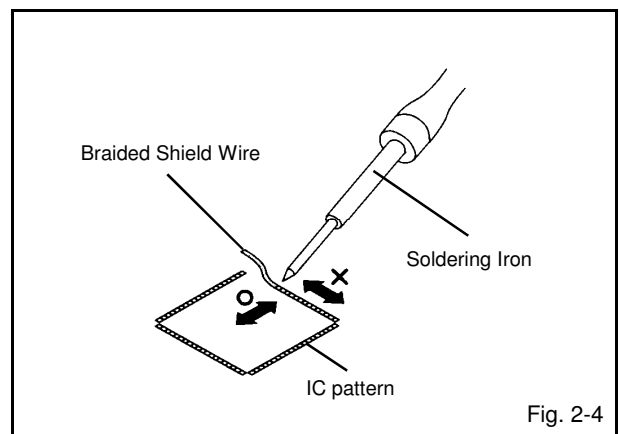
Some ICs on the PCB are affixed with glue, so be careful not to break or damage the foil of each IC leads or solder lands under the IC when removing it.



4. Peel off the Masking Tape.
5. Absorb the solder left on the pattern using the Braided Shield Wire. **(Refer to Fig. 2-4.)**

NOTE

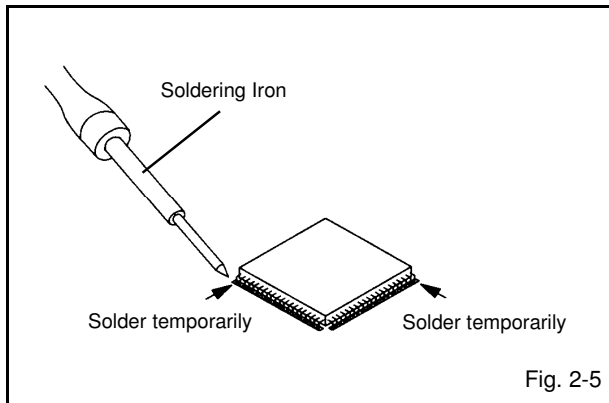
Do not move the Braided Shield Wire in the vertical direction towards the IC pattern.



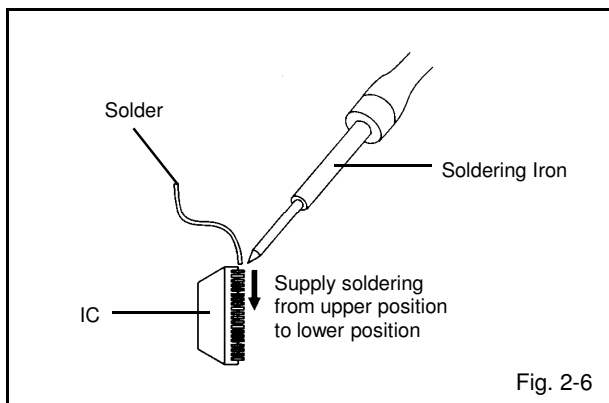
DISASSEMBLY INSTRUCTIONS

INSTALLATION

1. Take care of the polarity of new IC and then install the new IC fitting on the printed circuit pattern. Then solder each lead on the diagonal positions of IC temporarily. **(Refer to Fig. 2-5.)**



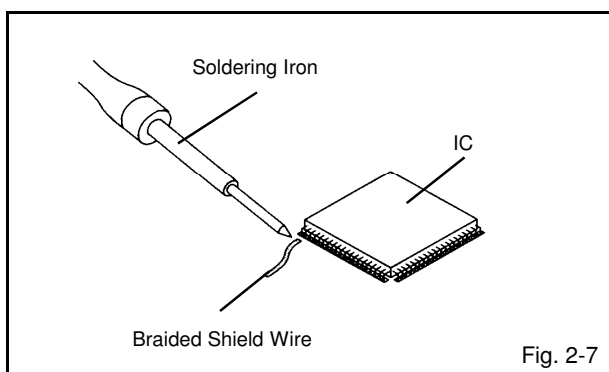
2. Supply the solder from the upper position of IC leads sliding to the lower position of the IC leads. **(Refer to Fig. 2-6.)**



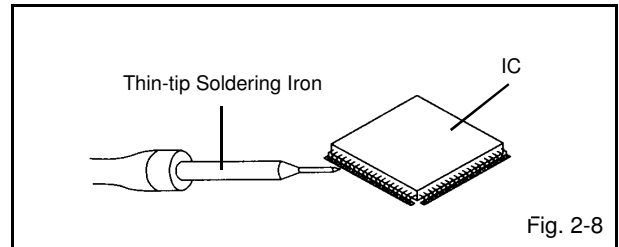
3. Absorb the solder left on the lead using the Braided Shield Wire. **(Refer to Fig. 2-7.)**

NOTE

Do not absorb the solder to excess.



4. When bridge-soldering between terminals and/or the soldering amount are not enough, resolder using a Thintip Soldering Iron. **(Refer to Fig. 2-8.)**



5. Finally, confirm the soldering status on four sides of the IC using a magnifying glass. Confirm that no abnormality is found on the soldering position and installation position of the parts around the IC. If some abnormality is found, correct by resoldering.

NOTE

When the IC leads are bent during soldering and/or repairing, do not repair the bending of leads. If the bending of leads are repaired, the pattern may be damaged. So, always be sure to replace the IC in this case.

SERVICE MODE LIST

This unit is provided with the following SERVICE MODES so you can repair, examine and adjust easily.

CAUTION

Do not feel after other MENU.

1. Check of the VERSION and SUM DATA on the screen.

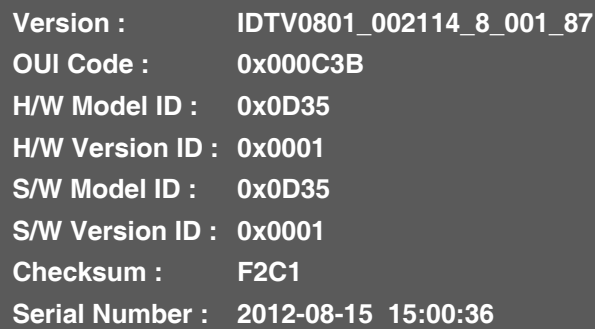
1-1 : Press the SETUP/MENU ---> 1147 button on the remote control.

1-2 : Press the DOWN button on the remote control,

1-3 : Select the "Setup" menu , then press ENTER button.

1-4 : Select the "Version Info" menu, then press ENTER button.

1-5 : On the screen as shown in **Fig. 1-1**.



The screenshot shows a dark grey background with white text. The text is organized into two columns. The left column contains labels for various system identifiers, and the right column contains their corresponding values. The labels are: Version, OUI Code, H/W Model ID, H/W Version ID, S/W Model ID, S/W Version ID, Checksum, and Serial Number. The values are: IDTV0801_002114_8_001_87, 0x000C3B, 0x0D35, 0x0001, 0x0D35, 0x0001, F2C1, and 2012-08-15 15:00:36.

Version :	IDTV0801_002114_8_001_87
OUI Code :	0x000C3B
H/W Model ID :	0x0D35
H/W Version ID :	0x0001
S/W Model ID :	0x0D35
S/W Version ID :	0x0001
Checksum :	F2C1
Serial Number :	2012-08-15 15:00:36

Fig. 1-1

ELECTRICAL ADJUSTMENTS

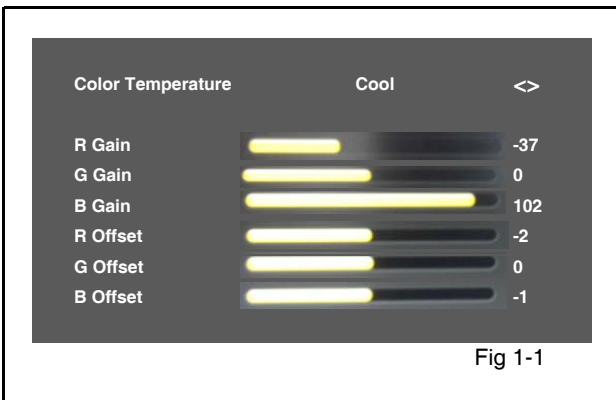
1. ADJUSTMENT PROCEDURE

Prepare the following measurement tools for electrical adjustments.

1. Pattern Generator

On-Screen Display Adjustment

1. Press the SETUP/MENU ---> 1147 button on the remote control.
2. Press the DOWN button on the remote control.
3. Select the "Video" menu, then press ENTER button on the remote control.
4. Select the "Color Temperature" menu , then press ENTER button on the remote control.
5. On the screen as shown in **Fig. 1-1**.



2. BASIC ADJUSTMENTS

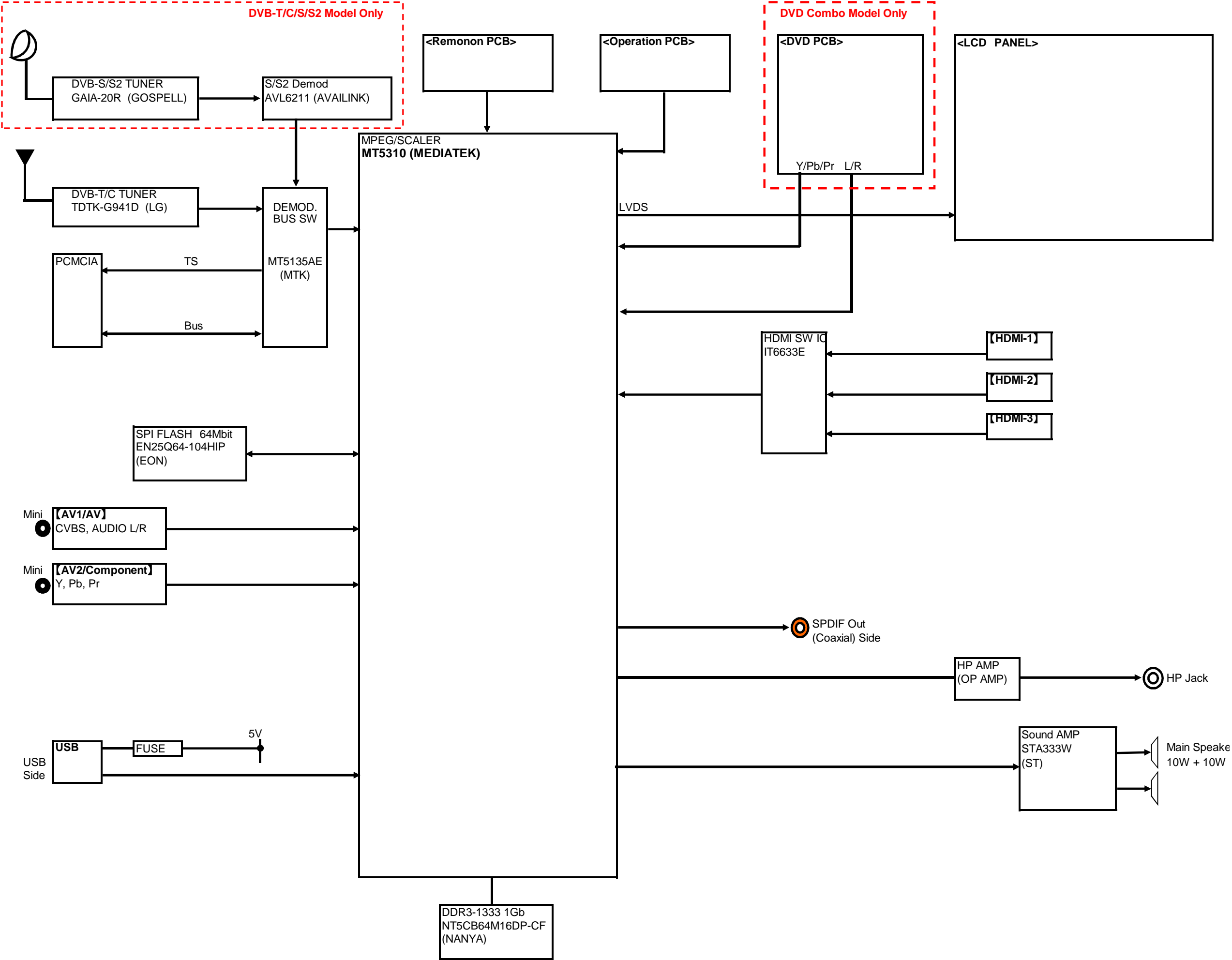
2-1: WHITE BALANCE

1. Place the set in Aging Test for more than 15 minutes.
2. Please select input About mode to adjust W/B.
3. Receive the gray scale pattern from the Pattern Generator.
4. Press the INPUT SELECT button on the remote control to set to the AV mode.
5. Using the remote control, set the brightness and contrast to normal position.
6. Press the MENU---> 1147 button on the remote control.
7. Press the DOWN button on the remote control.
8. Select the "Video" menu, then press ENTER button on the remote control.
9. Select the "Color Temperature" menu , then press ENTER button on the remote control.
10. Press the UP/DOWN button on the remote control to select the "R Gain", "G Gain", "B Gain", "R Offset", "G Offset", "B Offset".
11. Adjust the LEFT/RIGHT button on the remote control to whiten the R Gain, G Gain, B Gain, R Offset, G Offset, B Offset at each step tone sections equally..
12. Perform the above adjustments 10 and 11 until the white color is achieved.

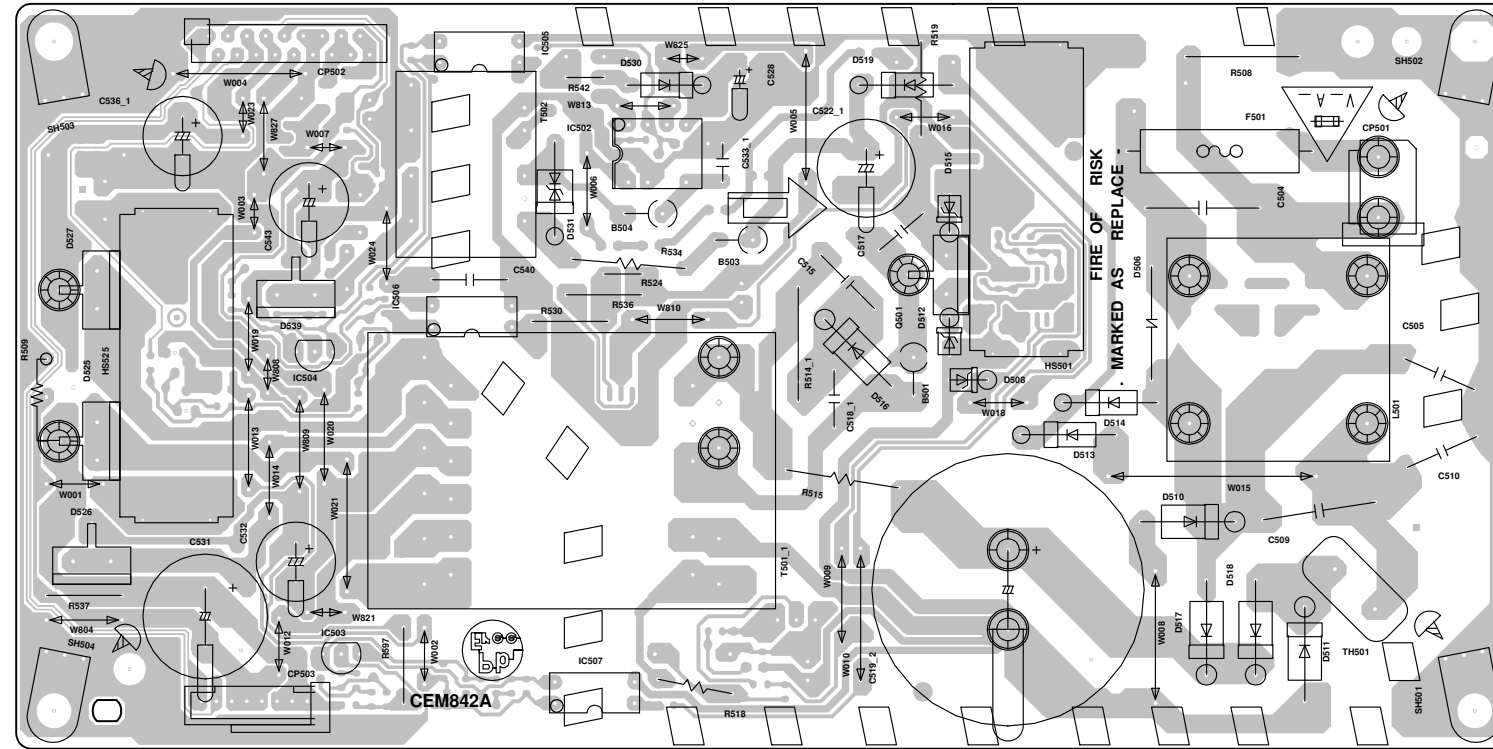
3. ELECTRICAL ADJUSTMENT PARTS LOCATION GUIDE (WIRING CONNECTION)



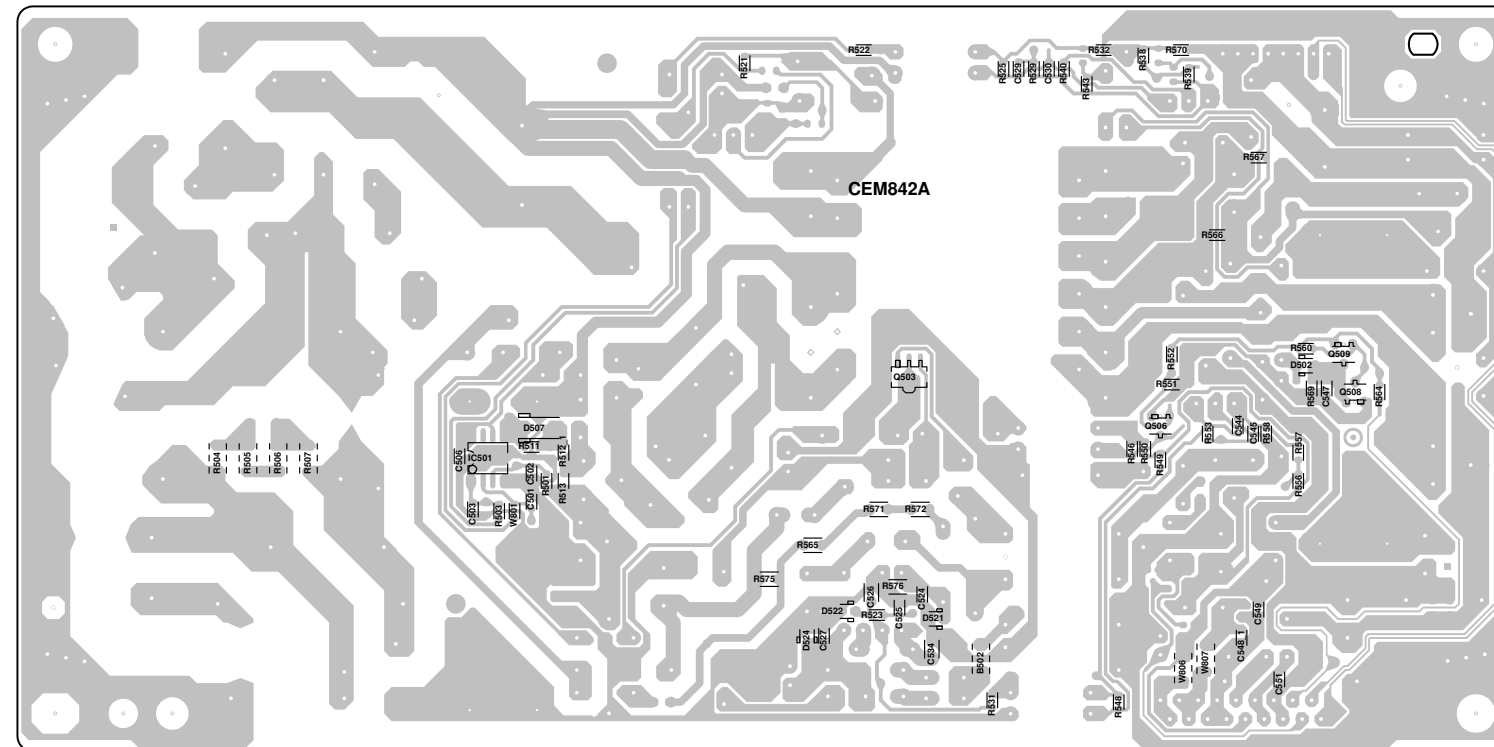
BLOCK DIAGRAM



**PRINTED CIRCUIT BOARDS
POWER (INSERTED PARTS)
SOLDER SIDE**



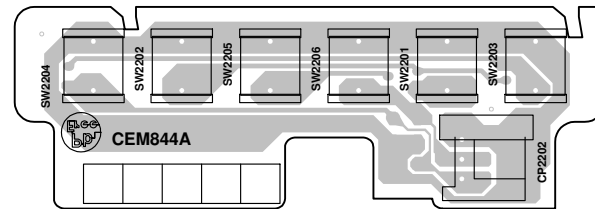
**POWER (CHIP MOUNTED PARTS)
SOLDER SIDE**



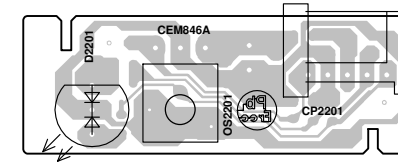
PRINTED CIRCUIT BOARDS

OPERATION (INSERTED PARTS)

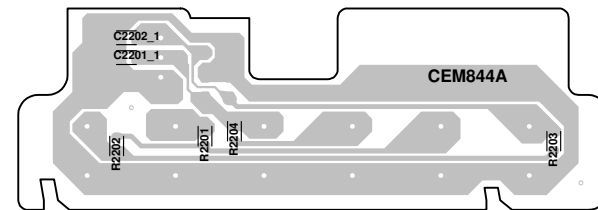
SOLDER SIDE



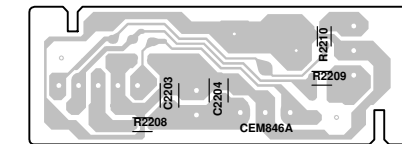
REMOCON (INSERTED PARTS) SOLDER SIDE



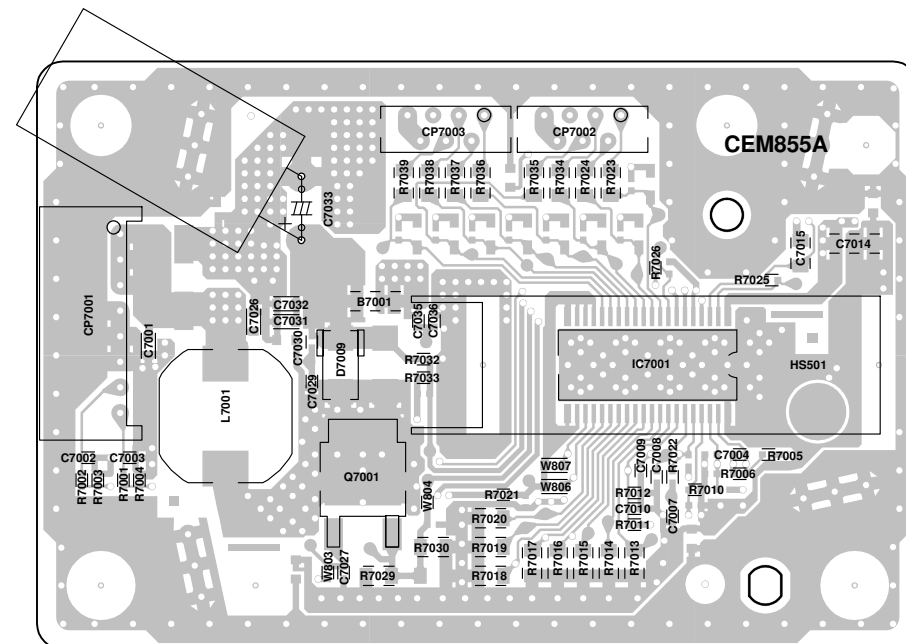
OPERATION (CHIP MOUNTED PARTS) SOLDER SIDE



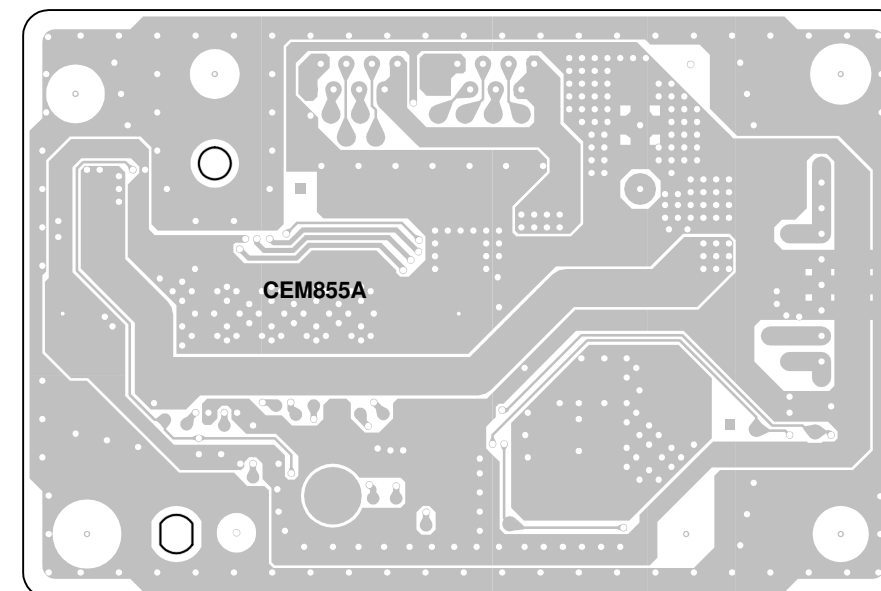
REMOCON (CHIP MOUNTED PARTS) SOLDER SIDE

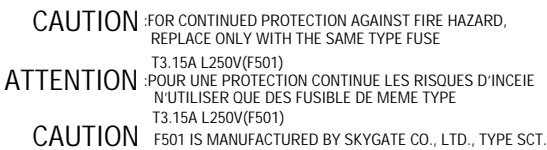


BACK LIGHT (TOP SIDE)

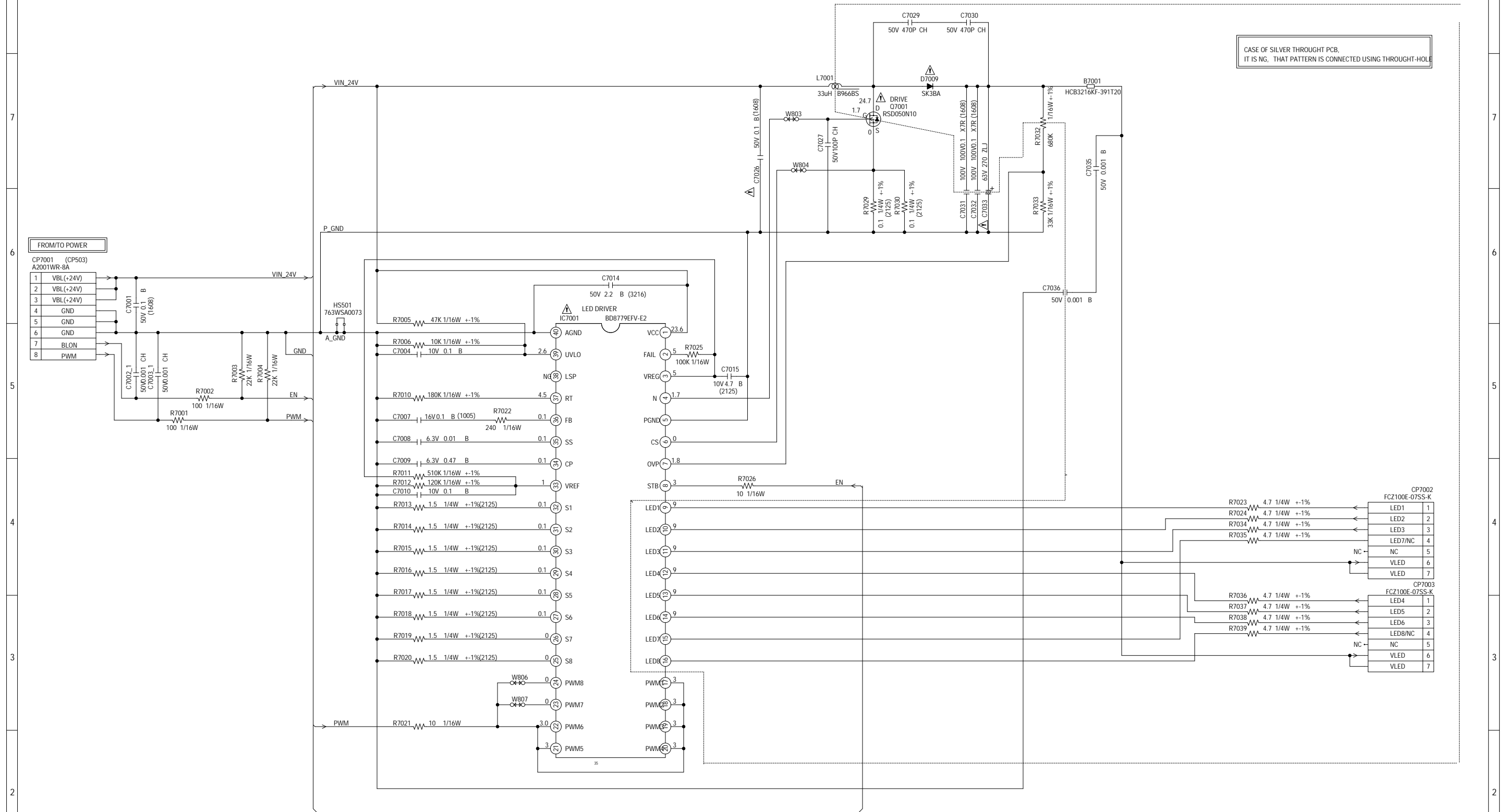


BACK LIGHT (BOTTOM SIDE)





BACK LIGHT SCHEMATIC DIAGRAM 1 (BACK LIGHT PCB)



NOTE: THIS SCHEMATIC DIAGRAM IS THE LATEST AT THE TIME OF PRINTING AND SUBJECT TO CHANGE WITHOUT NOTICE.

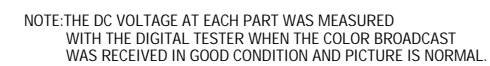
NOTE: THE RESISTOR MARKED F IS FUSE RESISTOR. THE ALUMI ELECTROLYTIC CAPACITOR MARKED NP IS NON POLAR ONE.

NOTE: THE DC VOLTAGE AT EACH PART WAS MEASURED WITH THE DIGITAL TESTER WHEN THE COLOR BROADCAST WAS RECEIVED IN GOOD CONDITION AND PICTURE IS NORMAL.

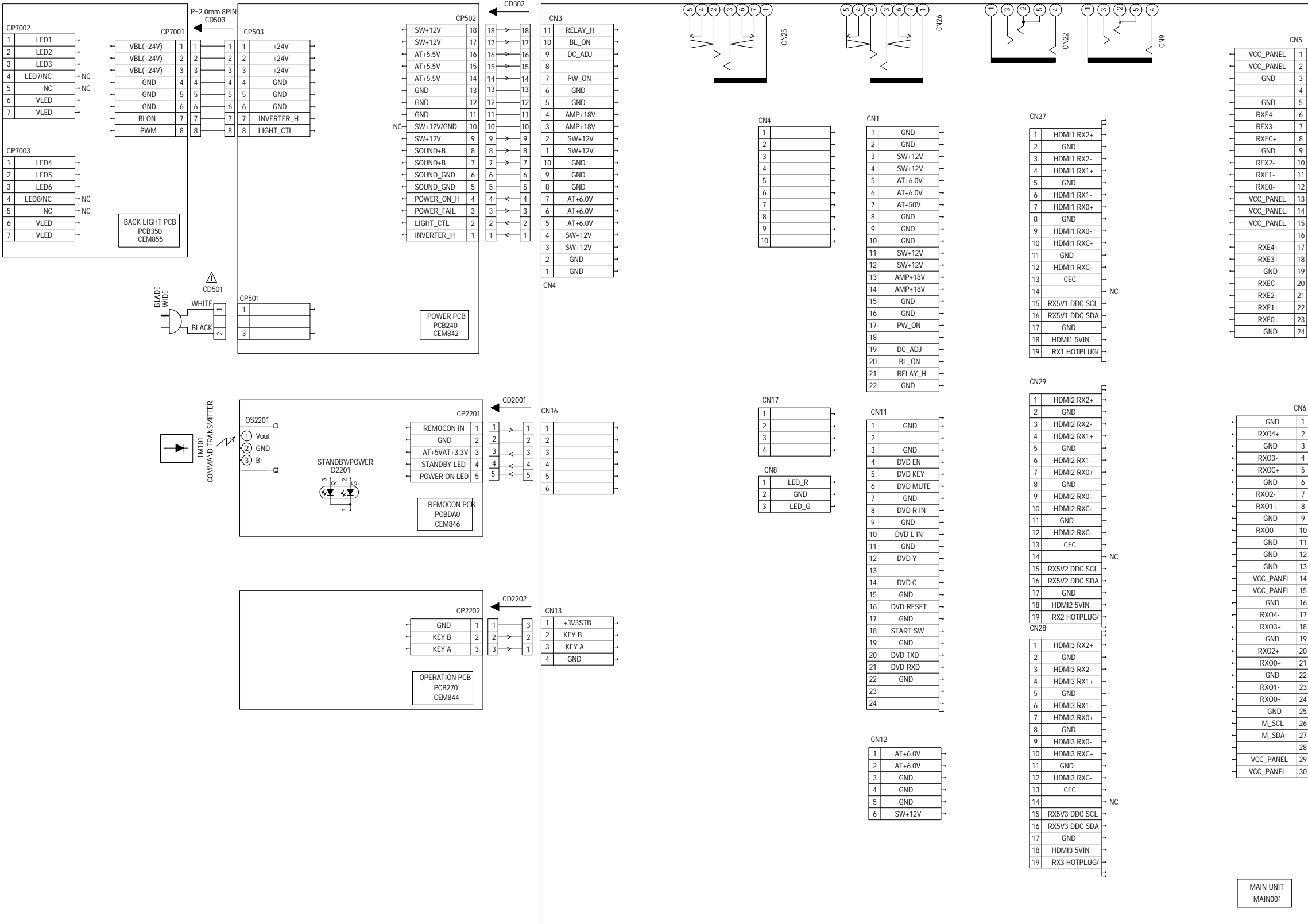
CAUTION SINCE THESE PARTS MARKED BY ARE CRITICAL FOR SAFETY, USE ONES DESCRIBED IN PARTS LIST ONLY.

ATTENTION LES PIECES REPARÉES PAR UN ETANT DANGEREUSES AN POINT DE VUE SECURITE N'UTILISER QUE CELLS DECRITES DANS LA NOMENCLATURE DES PIECES.

(REMOCON PCB)



INTERCONNECTION DIAGRAM



NOTE:THE DC VOLTAGE AT EACH PART WAS MEASURED
WITH THE DIGITAL TESTER WHEN THE COLOR BROADCAST
WAS RECEIVED IN GOOD CONDITION AND PICTURE IS NORMAL.

ATTENTION:LES PIECES REPARÉES PAR UN ETANT
DANGEREUSES AN POINT DE VUE SECURITE
N'UTILISER QUE CELLS DECRITES
DANS LA NOMENCLATURE DES PIECES

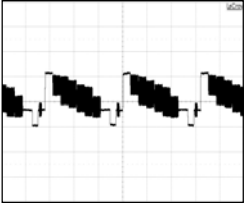
CAUTION: SINCE THESE PARTS MARKED BY ARE
CRITICAL FOR SAFETY,USE ONES
DESCRIBED IN PARTS LIST ONLY .

WAVEFORMS

SCALER VIDEO/AUDIO

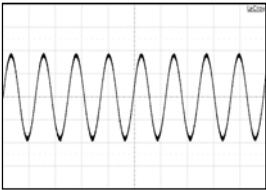
20us
500mv

AV IN



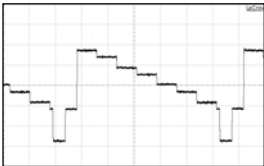
200mv
2ms

PC AUDIO L



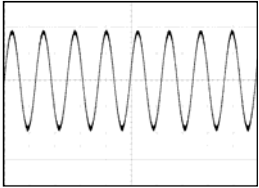
200mv
10us

PY



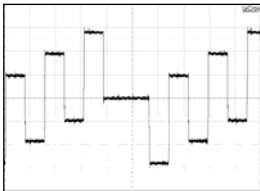
200mv
2ms

PC AUDIO R



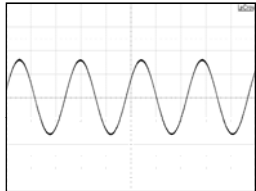
100mv
10us

PR



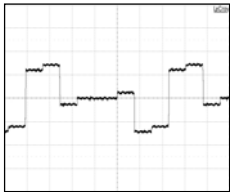
500mv
1ms

AUDIO OUT L



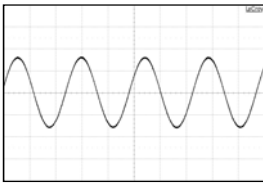
200mv
10us

PB



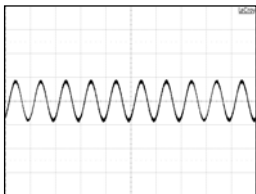
500mv
1ms

AUDIO OUT R



200mv
1ms

AU AUDIO IN L



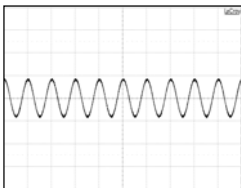
2v
1ms

SPEAKER L



200mv
1ms

AU AUDIO IN R



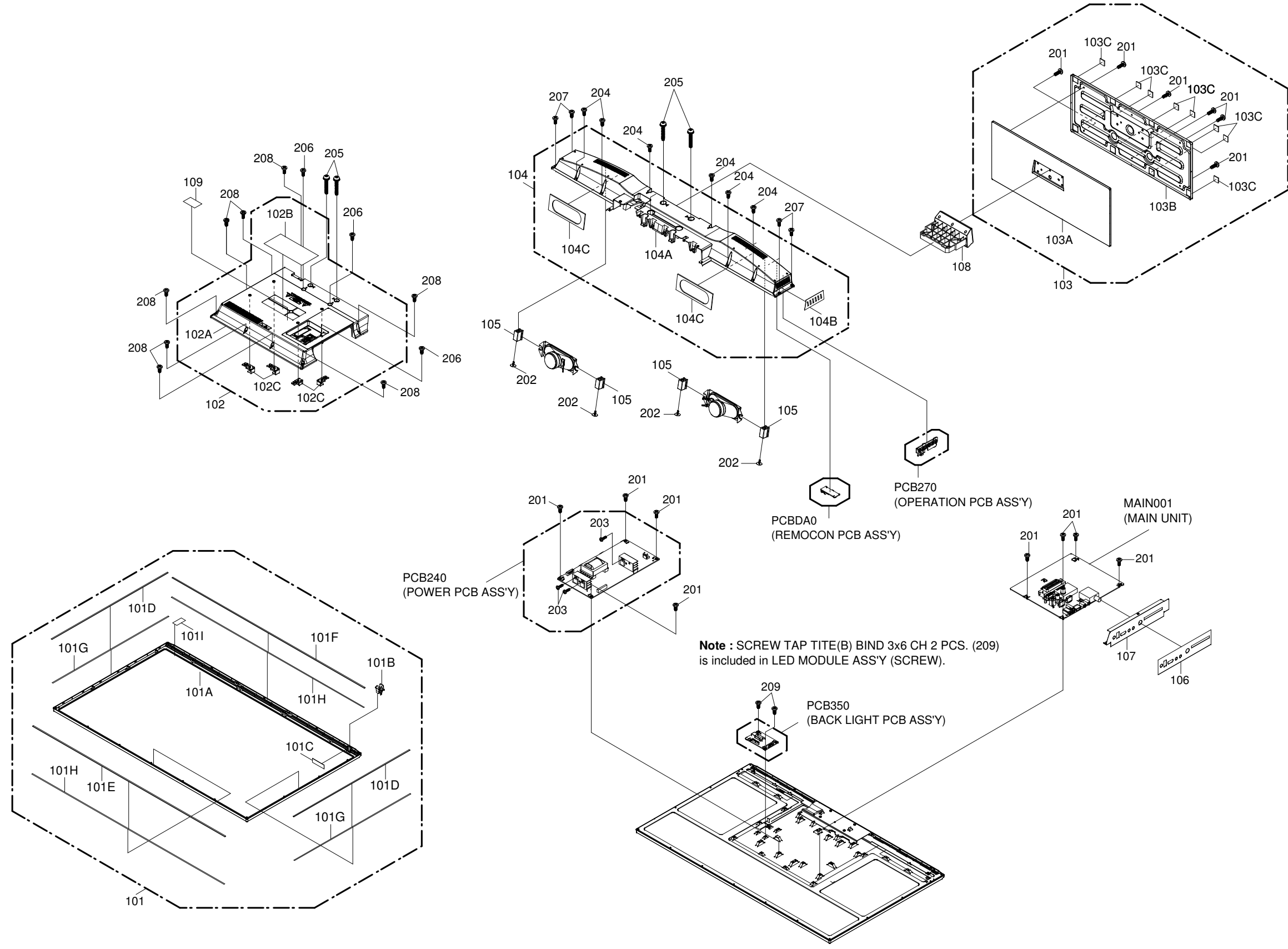
2v
1ms

SPEAKER R



NOTE: Main Board Signal Input/Output.

MECHANICAL EXPLODED VIEW



MECHANICAL REPLACEMENT PARTS LIST

REF. NO.	PART NO.	DESCRIPTION
101	7A708A998B	FRONT CABI ASS'Y
101A	708WPD4796	CABINET FRONT
101B	713WPA0478	GLASS LED
101C	800WQ00190	FELT SHEET
101D	92P200033A	CUSHION BEZEL LR
101E	92P200035A	CUSHION BEZEL TB
101F	92P200041A	CUSHION BEZEL TB
101G	93P30A014A	TAPE
101H	93P30A015A	TAPE
101I	93P300065A	TAPE
102	7A702B728A	COVER BACK ASS'Y
102A	702WPAC058	COVER BACK
102B	722202B586	SHEET RATING
102C	761WSA0867	ANGLE BACK
103	7A704A459A	STAND ASS'Y
103A	704WPAA320	STAND
103B	761WSAA522	ANGLE STAND
103C	800WFA0140	CUSHION LEG
104	7A709A004B	SPEAKER BOX ASS'Y
104A	709WPAA026	SPEAKER BOX
104B	721000A147	SHEET BUTTION
104C	800WF0A031	CUSHION SPEAKER
105	800CR00001	DAMPER SPEAKER
106	723000F999	SHEET JACK 1
107	761WSAA519	PLATE JACK
108	704WPAA311	STAND FRAME
109	722000A910	HELP LINE LABEL
201	810923080U	SCREW TAP TITE(B) BIND 3x8
202	8171130A0U	SCREW TAP TITE(B) WASHER12 3x10
203	8109130A0U	SCREW TAP TITE(B) WH7 3x10
204	8110226A0S	SCREW TAP TITE(P) BIND 2.6x10
205	810B150C0S	SCREW WASHER(B) M5x30
206	8109230A0S	SCREW TAP TITE(B) BIND 3x10
207	810923060S	SCREW TAP TITE (B)BIND 3x6
208	810923080S	SCREW TAP TITE(B) BIND 3x8
209	810923060U	SCREW TAP TITE(B) BIND 3x6
---	723000G001	SHEET CARTON
---	723000G002	ENERGY LABEL
---	791WHAA450	FILM BAG
---	791WHAA500	LAMIFILM BAG
---	791WHAA503	GIFT SHEET
---	792PHAA124	PACKAGE TOP
---	792PHAA125	PACKAGE BOTTOM
---	792PHAA126	PACKAGE CENTER
---	793PCDA489	GIFT BOX
---	7G8900007A	SCREW ASS'Y
---	J3NU0101A	INSTRUCTION BOOK(DE)
---	J3NU0110A	INSTRUCTION BOOK(FR)
---	J3NU0111A	INSTRUCTION BOOK(PL)
---	J3NU0114A	INSTRUCTION BOOK(EN)
---	JB5PD000	POLYBAG INSTRUCTION(RED CAUTION)

ELECTRICAL REPLACEMENT PARTS LIST

REF. NO.	PART NO.	DESCRIPTION		REF. NO.	PART NO.	DESCRIPTION	
RESISTORS				COILS & TRANSFORMERS			
△R504	R8X2R8334J	RC	330K OHM 1/8W	L7001	021YM5330M	COIL	33 UH
△R507	R8X2R8334J	RC	330K OHM 1/8W	△T501	0481351254	TRANSFORMER,SWITCHING	81351254
△R508	RC31X1126J	RC	12M OHM 1W	△T502	0481190201	TRANSFORMER,SWITCHING	81190201
△R513	R803R9333J	RC	33K OHM 1/16W	SWITCHES			
△R514	RC31X1224J	RC	220K OHM 1W	SW2201	0504101T34	SWITCH,TACT	EVQ21505R
△R515	R63881R22J	R,FUSE	0.22 OHM 1W	SW2202	0504101T34	SWITCH,TACT	EVQ21505R
△R518	R65584470J	R,FUSE	47 OHM 1/4W	SW2203	0504101T34	SWITCH,TACT	EVQ21505R
△R519	R3K781R12J	R,METAL OXIDE	0.12 OHM 1W	SW2204	0504101T34	SWITCH,TACT	EVQ21505R
△R534	R63881R22J	R,FUSE	0.22 OHM 1W	SW2205	0504101T34	SWITCH,TACT	EVQ21505R
CAPACITORS				SW2206	0504101T34	SWITCH,TACT	EVQ21505R
△C501	CS0PB04E4K	CC	0.015 UF 50V B	P.C.BOARD ASSEMBLIES			
△C502	CS0PCH4L2J	CC	330 PF 50V CH	PCB240	A3NU01W240P	POWER PCB ASS'Y	CEM842A
△C503	CS0PCH4L1J	CC	33 PF 50V CH	PCB270	A3NU01W270P	OPERATION PCB ASS'Y	CEM844A
△C504	P4K12D334K	CMPP	0.33 UF 310V	PCB350	A3NU01W350P	BACK LIGHT PCB ASS'Y	CEM855A
△C505	CE39E0ME3M	CC	0.0015UF 250V E	PCBDA0	A3NU01WDA0P	REMOCON PCB ASS'Y	CEM846A
△C506	CS0PB0415K	CC	0.1 UF 50V B	MISCELLANEOUS			
△C509	P4K12D224K	CMPP	0.22 UF 310V	B501	024HT03564	CORE,BEADS	W4BRH3.5X6X1.0
△C510	CE39E0ME3M	CC	0.0015UF 250V E	△B502	024AC1121G	CORE,BEADS	BLM31PG121SN1L
△C515	P3N5F5222J	CPP	0.0022UF 630V PP	B503	024HT03564	CORE,BEADS	W4BRH3.5X6X1.0
△C517	COPLRR7Q2K	CC	470 PF 2KV R	B504	024HT03564	CORE,BEADS	W4BRH3.5X6X1.0
C518	CP3YSL7Q1J	CC	47 PF 2KV SL	B7001	024HC13914	CORE,BEADS	HCB3216KF-391T20
△C519	E83FHH121D	CE	120 UF 400V	BT001	141U004021	BATTERY,MANGAN	AAA(R03)
	E9EHHJ121D	CE	120 UF 450V	BT002	141U004021	BATTERY,MANGAN	AAA(R03)
△C522	E63ZFH220D	CE	22 UF 400V	CD301	06EH147101	CORD CONNECTOR	EH147101
△C528	E8E2U5470D	CE	47 UF 50V	△CD501	120A658807	CORD AC	MO27-019BK
△C531	E8E1G4152M	CE	1500 UF 35V	CD502	12C1011701	CORD JUMPER	FFC125181700510T1-GOO
△C532	E9E8F3102D	CE	1000 UF 25V	CD503	06EH280801	CORD CONNECTOR	EH280801
△C533	CP3YSL7Q1J	CC	47 PF 2KV SL	CD505	06EHB18006	CORD,RCA PIN	CRM0318002
△C536	E9E8F3102D	CE	1000 UF 25V	CD506	06EHB18005	CORD,RCA PIN	CRM0318001
C540	CE39E0M13M	CC	0.001 UF 250V E	△CP501	069S320419	CONNECTOR PCB SIDE	A3963WV2-3PD
△C543	E83YT1102D	CE	1000 UF 10V	CP502	069E710630	CONNECTOR PCB SIDE	00_6216_018_000_808+
△C7026	CS0PB0415K	CC	0.1 UF 50V B	CP503	06GG280029	CONNECTOR PCB SIDE	A2001WV-8A
△C7033	E9E806271D	CE	270 UF 63V	CD2201	06EH266601	CORD CONNECTOR	EH266601
DIODES				CD2202	06CH246809	CORD CONNECTOR	CH246809
D502	DE7RB3002B	DIODE ZENER	UDZSNP30B TE-17	CP2201	06GG250019	CONNECTOR PCB SIDE	A2001WR-5A
D506	DOU011020M	DIODE VARISTA	DA38-102MB-M	CP2202	06GG230019	CONNECTOR PCB SIDE	A2001WR-3A
D507	D28R11FS20	DIODE	EC11FS2-TE12L	CP7001	06GG280019	CONNECTOR PCB SIDE	A2001WR-8A
△D508	D97U03301B	DIODE,ZENER	MTZJ33B T-77	CP7002	06GRV73019	CONNECTOR PCB SIDE	FCZ100E-07SS-K
△D510	D4JXRM11C0	DIODE SILICON	ZRM11C	CP7003	06GRV73019	CONNECTOR PCB SIDE	FCZ100E-07SS-K
△D511	D4JXRM11C0	DIODE SILICON	ZRM11C	EL2401	124116281A	EYE LET	EYE LET XRY16X28BD
△D512	D97U03301B	DIODE,ZENER	MTZJ33B T-77	EL2402	124120301A	EYE LET	EYE LET XRY20X30BD
△D513	D4CTN40060	DIODE SILICON	1N4006-A5	△F501	0805A05003	FUSE	SG5013005P-R(GF-009)
△D514	D4CTN40060	DIODE SILICON	1N4006-A5	MAIN001	1564Y00018	MAIN UNIT	T.MT5310.72A_18P
△D515	D97U03301B	DIODE,ZENER	MTZJ33B T-77	OS2201	077Q038009	REMOTE RECEIVER	KSM-2003TCW2P
△D516	D2BFARS020	DIODE SILICON	SARS02-LFB2	SH501	126D000045	TERMINAL PIN	YQ-12
△D517	D4JXRM11C0	DIODE SILICON	ZRM11C	SH502	126D000045	TERMINAL PIN	YQ-12
△D518	D4JXRM11C0	DIODE SILICON	ZRM11C	SH503	126D000045	TERMINAL PIN	YQ-12
△D519	D4CTN40060	DIODE SILICON	1N4006-A5	SH504	126D000045	TERMINAL PIN	YQ-12
D521	DE7RB1502B	DIODE ZENER	UDZSNP15B TE-17	△SP301	070Y056014	SPEAKER	S0412F41
D522	DE7RB3002B	DIODE ZENER	UDZSNP30B TE-17	△SP302	070Y056014	SPEAKER	S0412F41
D524	DE7RB3302B	DIODE ZENER	UDZSNP33B TE-17	△TH501	DSVEHE4R7M	THERMISTOR	B57237S0479M000
△D525	D28A10A200	DIODE SILICON	FCF10A20	TM101	076D0UE071	TRANSMITTER	000-225000070
△D526	D28A10A100	DIODE SCHOTTKY BARRIER	FCH10A10	TU001	0164E03021	DIGITAL TUNER	TDTK-G731D(A)
△D527	D28A10A200	DIODE SILICON	FCF10A20	TU002	0164E03022	DIGITAL TUNER	EDS-10830FNBHB
D530	D2LT001F50	DIODE SILICON	1F5-E	△V2801	A3NU01WFM0P	LED MODULE ASS'Y	V390HJ1-P01-LED OR1A
△D531	DK1T2D1400	POWER CLAMPER	ST02D-140	RESISTOR			
△D539	D28A10A061	DIODE SCHOTTKY BARRIER	FCQS10A065	RC..... CARBON RESISTOR			
D2201	0021E9Q010	LED	LTL-1BEFJ-002A	CAPACITORS			
△D7009	D4CRSK3BA0	DIODE SCHOTTKY BARRIER	SK3BA	CC.....	CERAMIC CAPACITOR		
ICS				CE.....	ALUMI ELECTROLYTIC CAPACITOR		
△IC501	ICAJ0A5640	POWER IC CONTROL	FA5640N-C6-TE3	CP.....	POLYESTER CAPACITOR		
△IC502	I5SD0P2M40	VDSS=700V F=67KHZ	MIP2M40MSSCF	CPP.....	POLYPROPYLENE CAPACITOR		
△IC503	11KJ9A431A	VARIABLE SHUNT REGULATOR TAPE	KIA431A-AT	CPL.....	PLASTIC CAPACITOR		
△IC504	11KJ9A431A	VARIABLE SHUNT REGULATOR TAPE	KIA431A-AT	CMP.....	METAL POLYESTER CAPACITOR		
△IC505	000220002W	PHOTO COUPLER	PS2561AL1-1-V(W)	CMPL.....	METAL PLASTIC CAPACITOR		
△IC506	000220002W	PHOTO COUPLER	PS2561AL1-1-V(W)	CMPP.....	METAL POLYPROPYLENE CAPACITOR		
△IC507	000220002W	PHOTO COUPLER	PS2561AL1-1-V(W)	TRANSISTORS			
△IC7001	I07F087790	LED DRIVER IC	BD8779EFV-E2	△Q501	TK1009N900	FET	FMV09N90E
TRANSISTORS				△Q503	TAAA01664Y	TRANSISTOR SILICON	KTA1664-Y-RTF/P
Q506	TCAA3875SY	TRANSISTOR SILICON	KTC3875S_Y_RTK	Q508	TCAA3875SY	TRANSISTOR SILICON	KTC3875S_Y_RTK
Q508	TCAA3875SY	TRANSISTOR SILICON	KTC3875S_Y_RTK	Q509	TAAA1504SY	TRANSISTOR SILICON	KTA1504S_Y_RTK
Q509	TAAA1504SY	TRANSISTOR SILICON	KTA1504S_Y_RTK	△Q7001	TJ7T50N100	FET	RSD050N10TL
△Q7001	TJ7T50N100	FET	RSD050N10TL	COILS & TRANSFORMERS			
COILS & TRANSFORMERS				△L501	029B000185	COIL,LINE FILTER	JLB28120

SPEC.NO.	M3NU-01W
O/R NO.	F295101