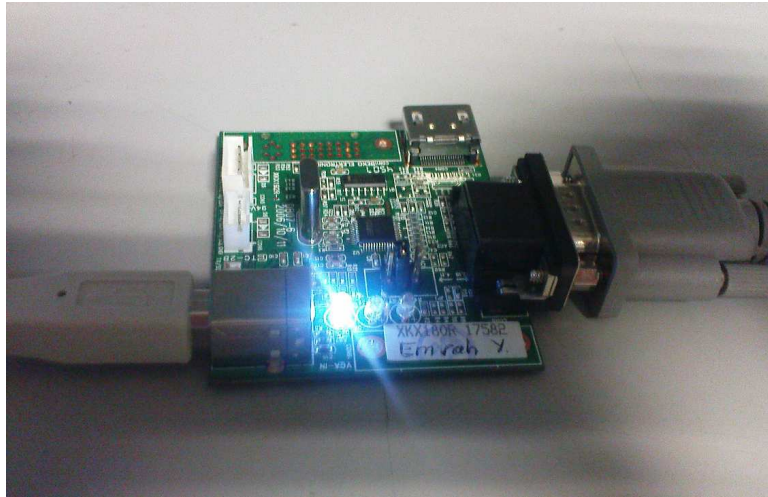


THE PROCEDURE FOR LOADING SM/U1/SH/DH ANALOG SOFTWARE

Picture 1 shows the hardware for loading the SM/U1/SH/DH analog software. It is similar with LX chassis. The one side of the tool is USB cable (is must be connected to computer), and other side is VGA cable.



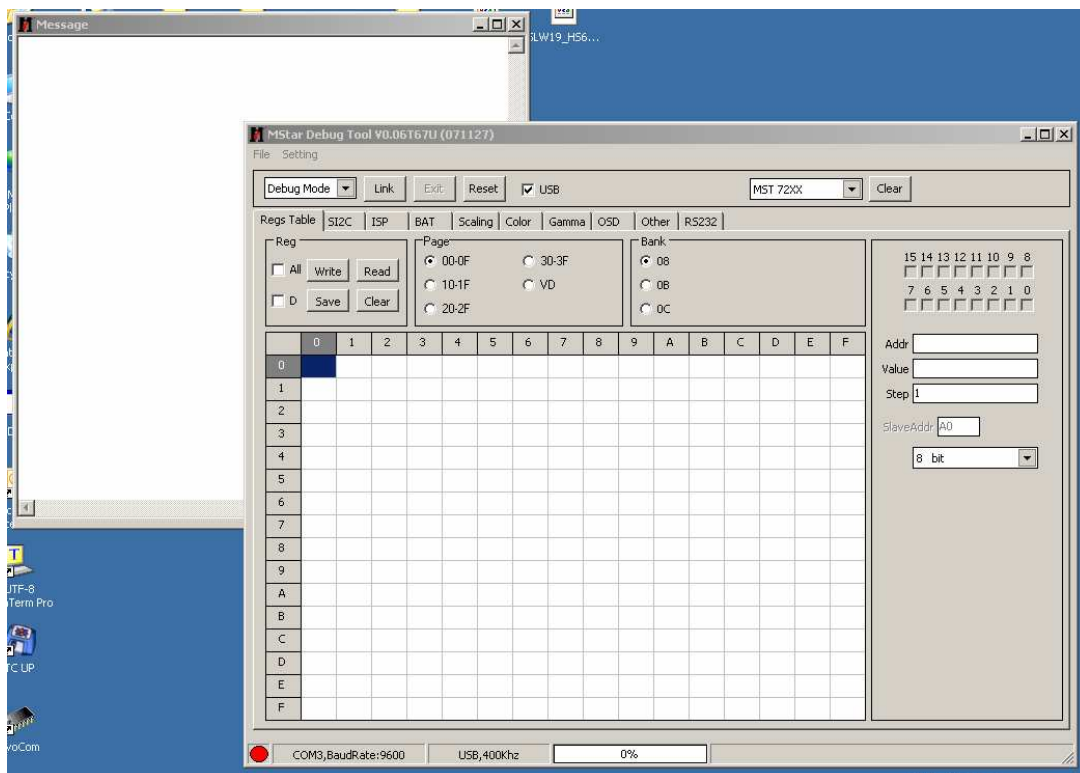
VGA cable must be full VGA cable. Or you can use a dongle (or converter) to change some pins in VGA cable. Below picture shows that converter.



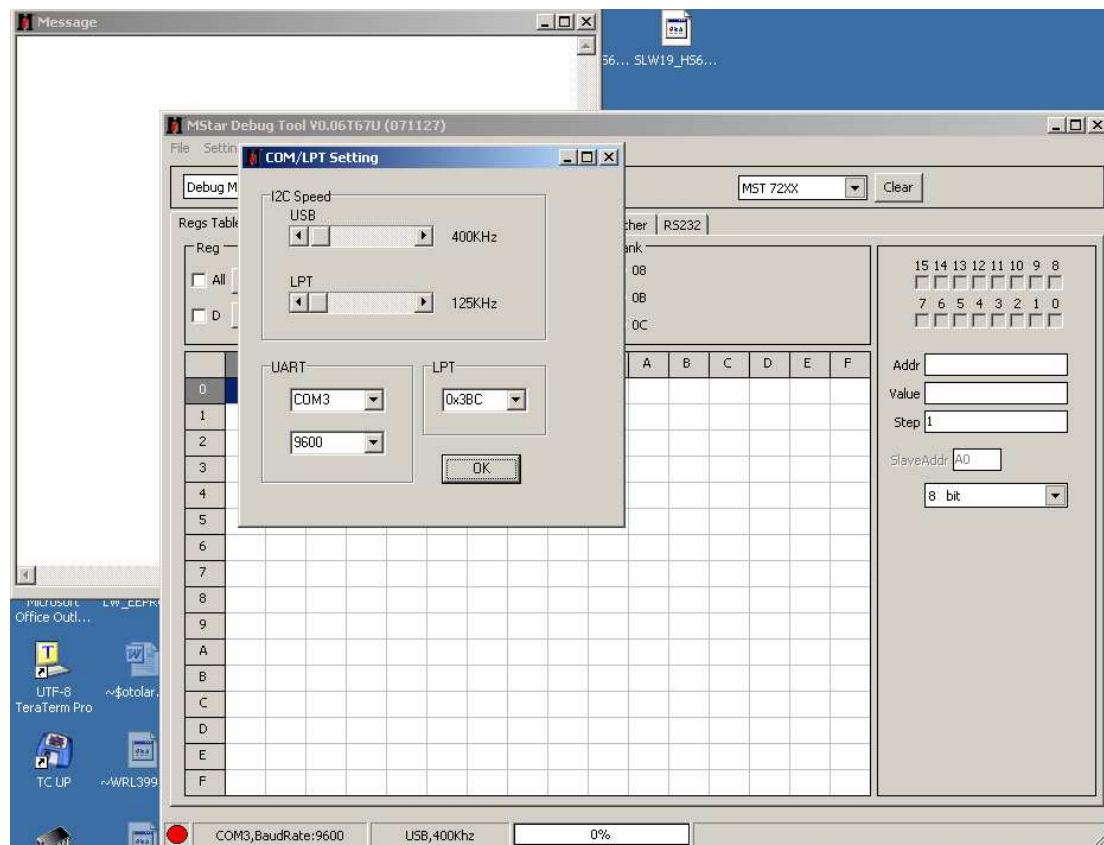
With that converter or with full VGA cable, you can connect the TV as shown in below Picture.



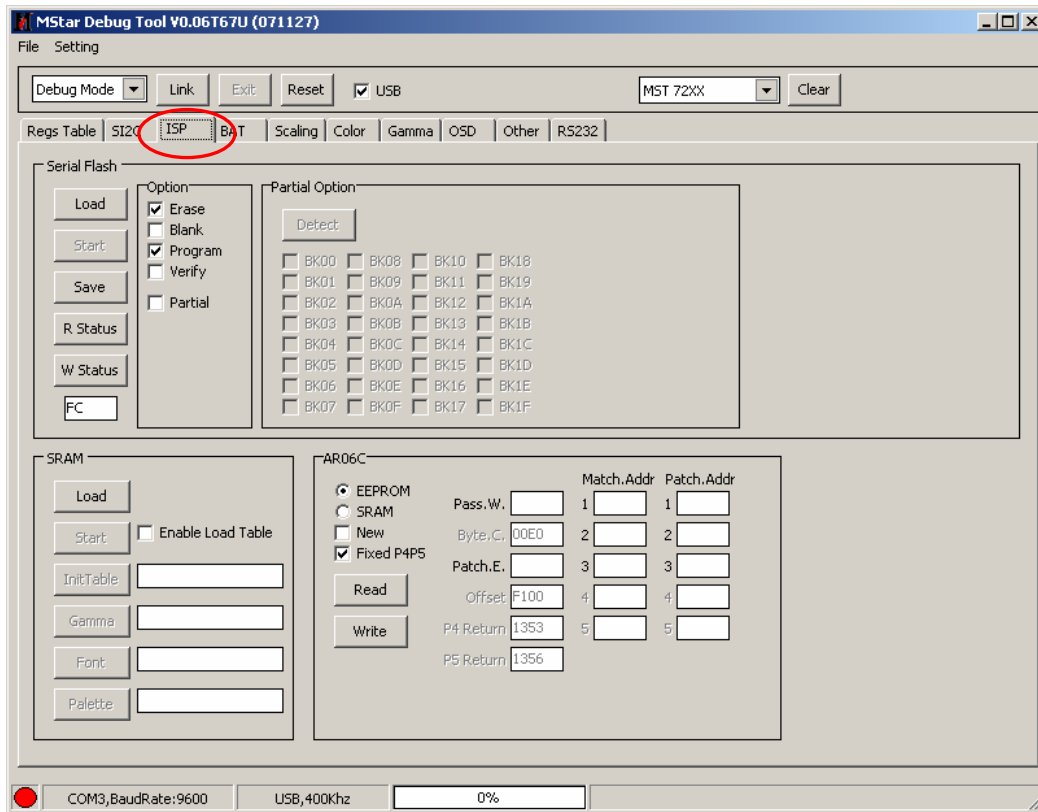
After the tool introduction, now we can load the software. First the user interface of programme must be opened. (with “MStar Debug Tool-v0.06T67U.exe” file) When you pressed .exe file, you meet with below Picture.



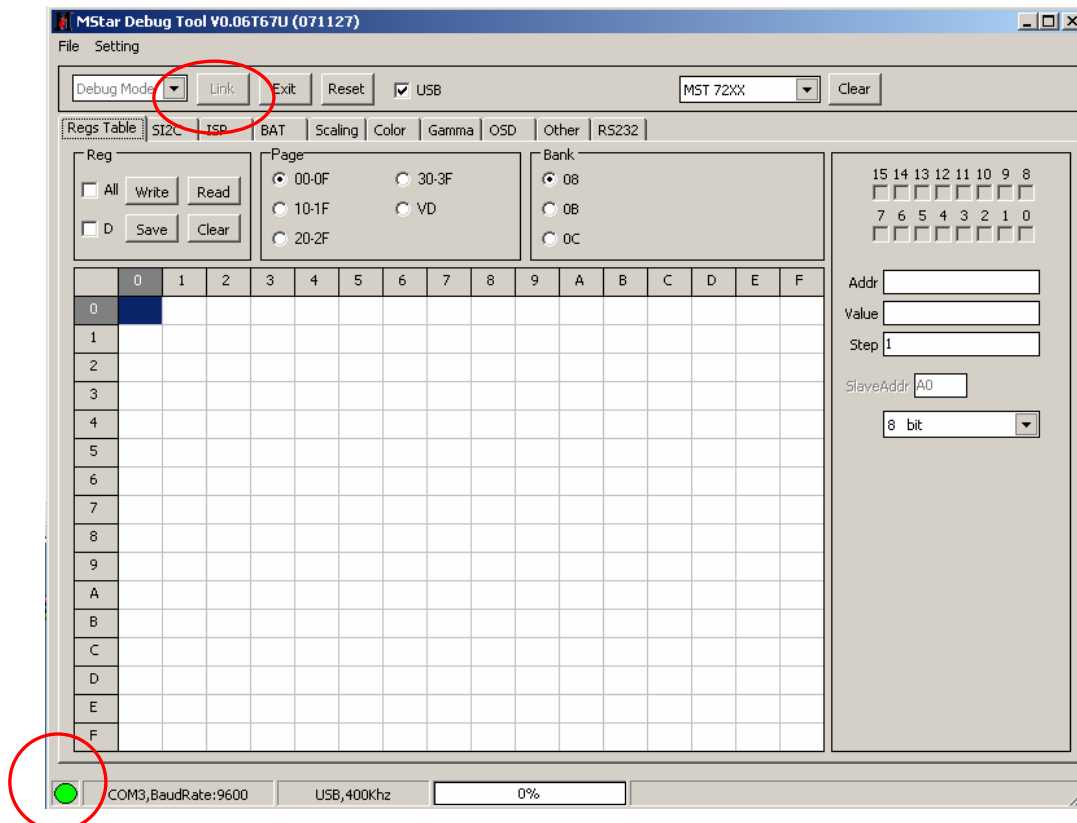
You do not need any arrangement on interface, but you can control Uart port number and bound rate (which bound rate must be 9600 for SM/U1/SH/DH chassis) with Setting menu. For Setting Menu you must press “Settings” tabs.



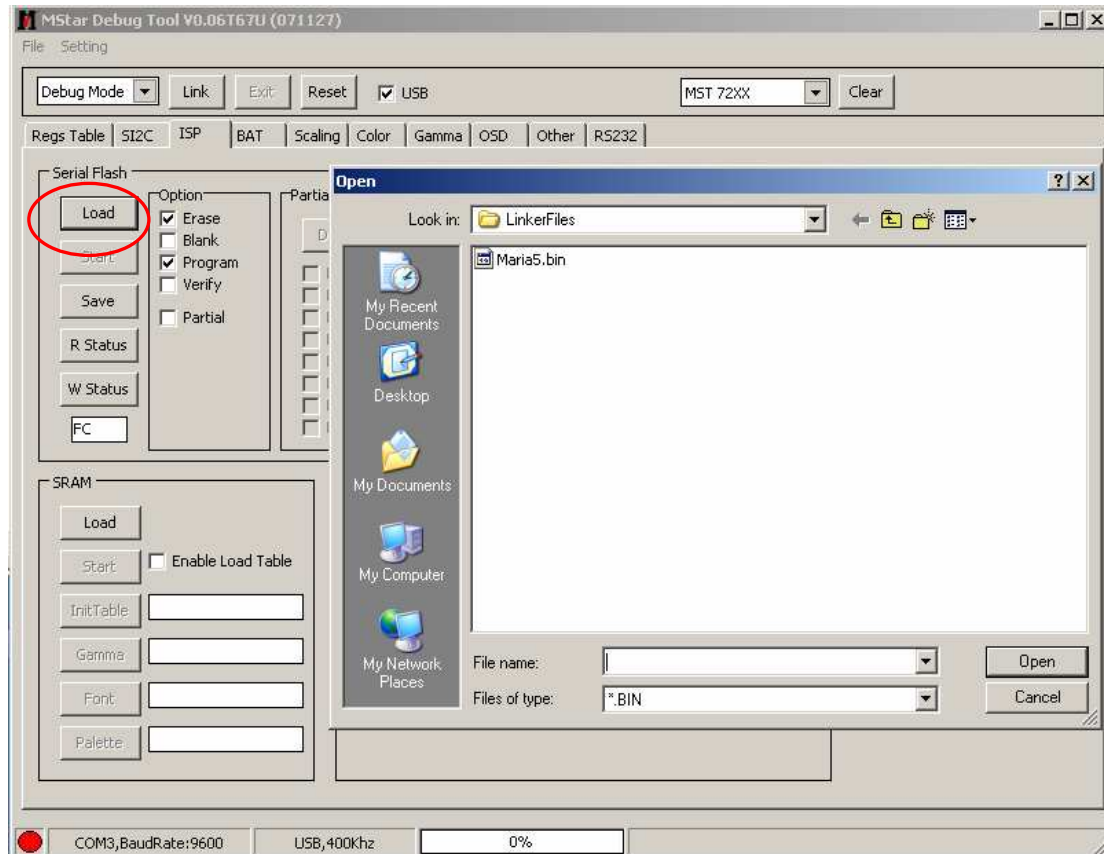
Now, to load the software, you pressed ISP tabs. Below Picture, shows ISP tabs. You do not need any alteration here.



You can control the with Link button. If everything is OK (or computer is connect the TV correctly), the red button, in the left of the bottom, convert green colour.



After connection control, now the software can be load with Load button. When you pressed the load button, you must show the analog software. After showing, please press open button.



When the software is loading, bar on the bottom is proceed. (Below picture) When it is reached on %100, the software loading process is complete.

MStar Debug Tool V0.06T67U (071127)

File

Setting

Debug Mode

Link

Exit

Reset

☒ USB

MST 72XX

Clear

Regs Table

SI2C

ISP

BAT

Scaling

Color

Gamma

OSD

Other

RS232

Serial Flash

Load

Start

Save

R Status

W Status

FC

☒ Erase

☐ Blank

☒ Program

☐ Verify

☐ Partial

Detect

☐ BK00

☐ BK08

☐ BK10

☐ BK18

☐ BK01

☐ BK09

☐ BK11

☐ BK19

☐ BK02

☐ BK0A

☐ BK12

☐ BK1A

☐ BK03

☐ BK0B

☐ BK13

☐ BK1B

☐ BK04

☐ BK0C

☐ BK14

☐ BK1C

☐ BK05

☐ BK0D

☐ BK15

☐ BK1D

☐ BK06

☐ BK0E

☐ BK16

☐ BK1E

☐ BK07

☐ BK0F

☐ BK17

☐ BK1F

SRAM

Load

Start

InitTable

Gamma

Font

Palette

☐ Enable Load Table

AR06C

☒ EEPROM

☐ SRAM

☐ New

☒ Fixed P4P5

Pass.W.

Byte.C.

Patch.E.

Offset

P4 Return

P5 Return

Read

Write

Match.Addr

Patch.Addr

1

2

3

4

5

1

2

3

4

5

F100

1353

1356

COM3,BaudRate:9600

USB,400KHz

26%