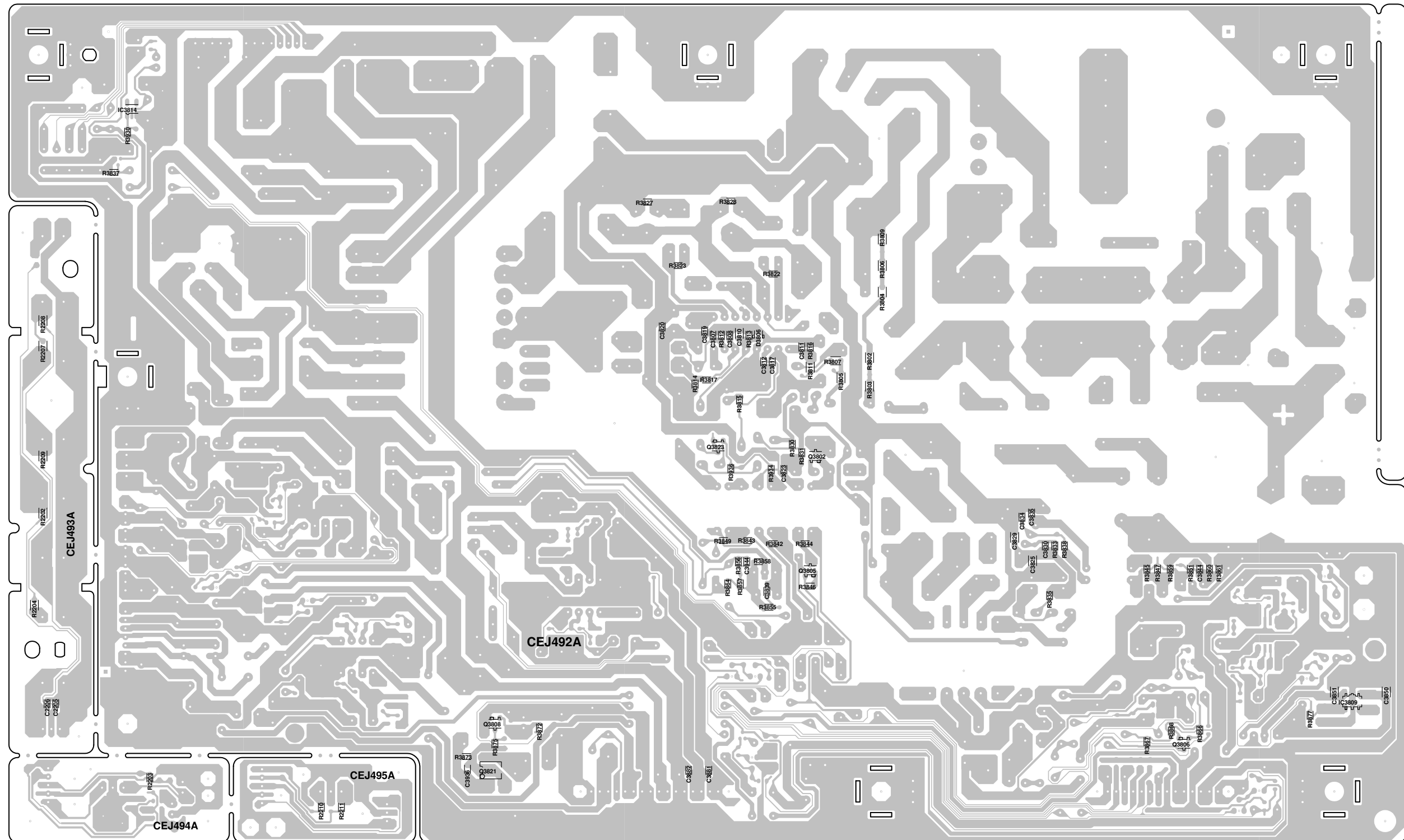
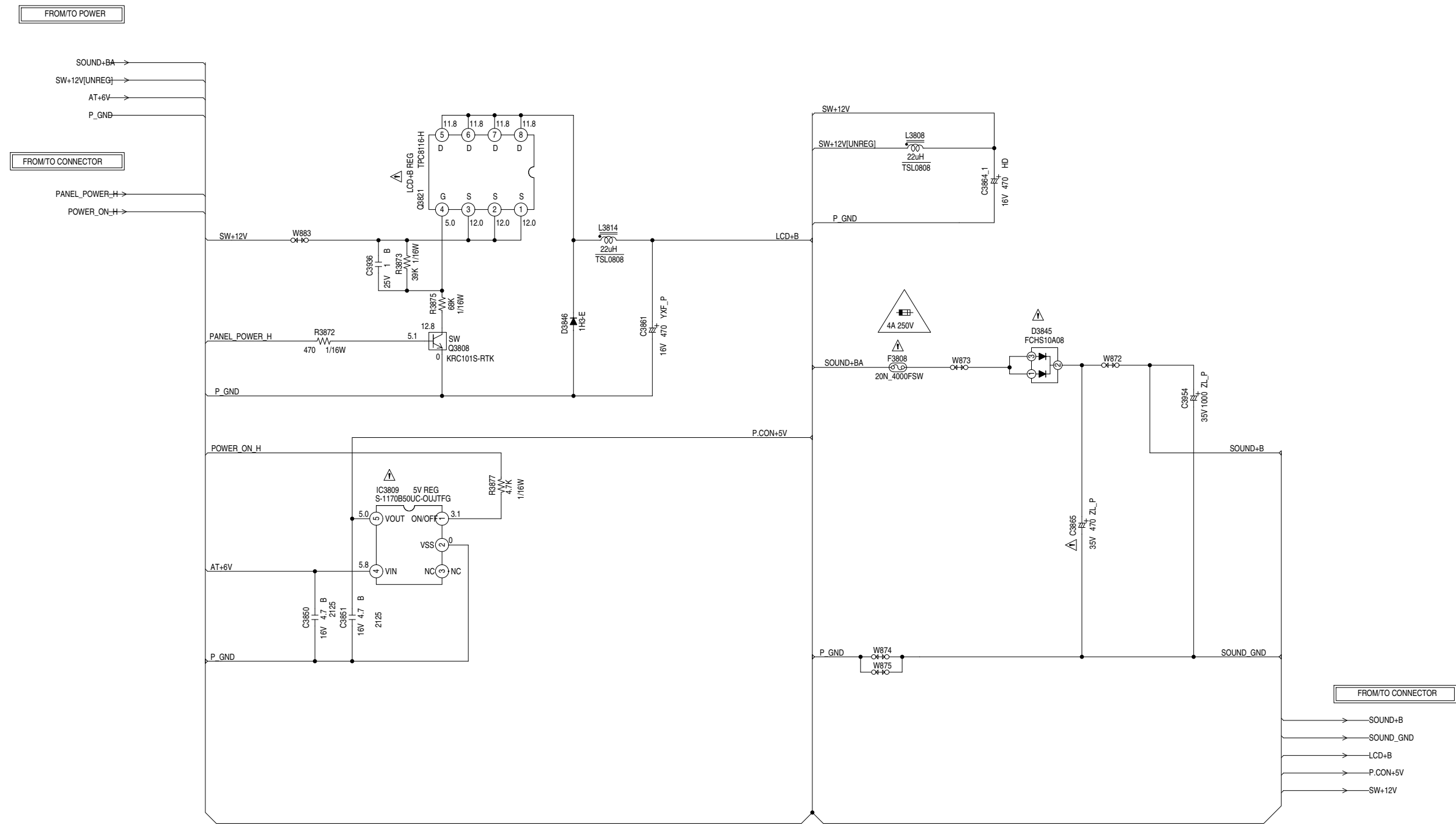


PRINTED CIRCUIT BOARDS
POWER/OPERATION/REMOCON/LED (CHIP MOUNTED PARTS)
SOLDER SIDE



REGULATOR SCHEMATIC DIAGRAM
(POWER PCB)



CAUTION :FOR CONTINUED PROTECTION AGAINST FIRE HAZARD,
REPLACE ONLY WITH THE SAME TYPE FUSE 4A 125V(F3808)
ATTENTION :POUR UNE PROTECTION CONTINUE LES RISQUES D'INCEIE
N'UTILISER QUE DES FUSIBLE DE MEME TYPE 4A 125V(F3808)
CAUTION :F3808 ARE MANUFACTURED BY SKYGATE CO.,LTD.,TYPE 20N.

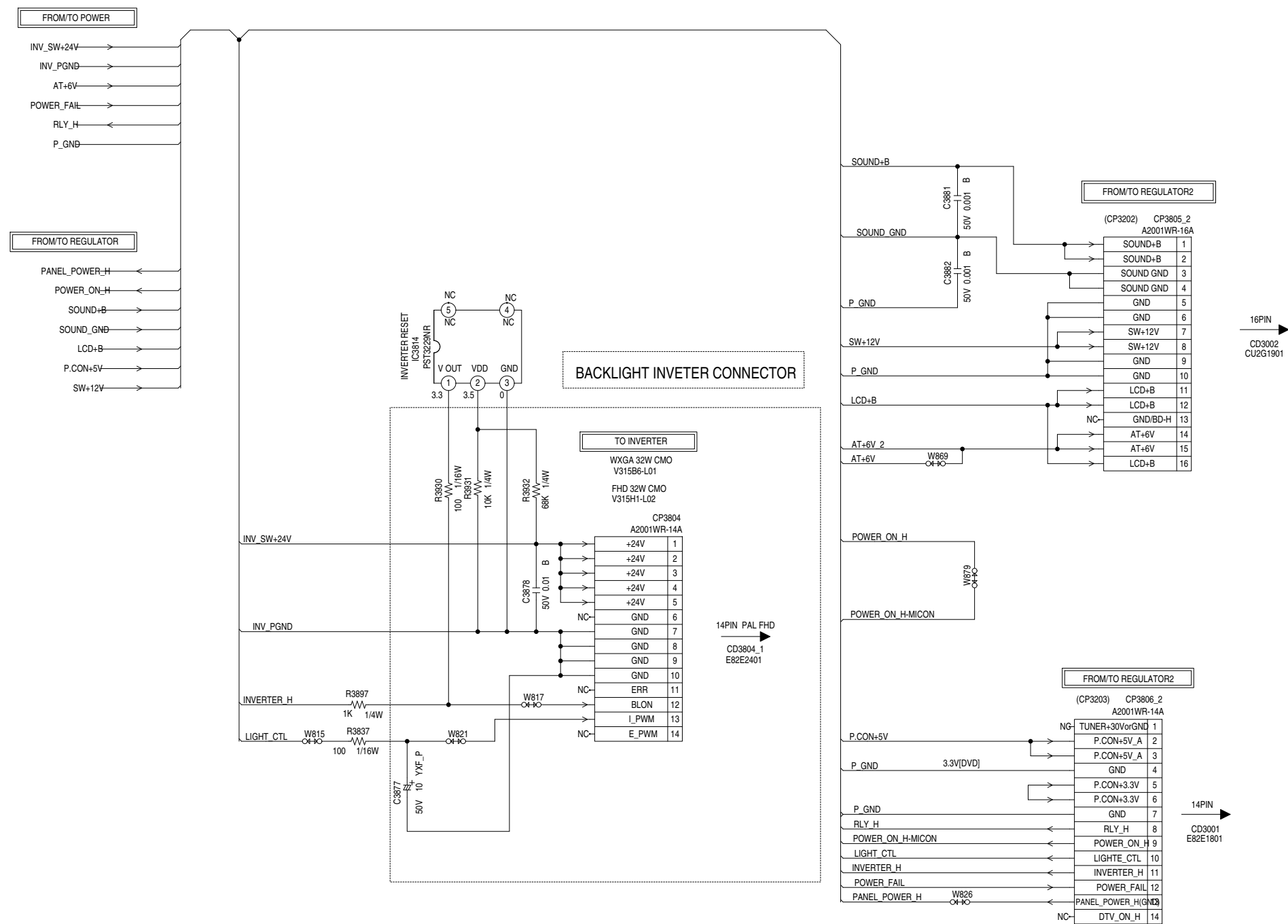
NOTE:THIS SCHEMATIC DIAGRAM IS THE LATEST AT THE TIME
OF PRINTING AND SUBJECT TO CHANGE WITHOUT NOTICE
NOTE:THE DC VOLTAGE AT EACH PART WAS MEASURED
WITH THE DIGITAL TESTER WHEN THE COLOR BROADCAST
WAS RECEIVED IN GOOD CONDITION AND PICTURE IS NORMAL.

CAUTION SINCE THESE PARTS MARKED BY ARE
CRITICAL FOR SAFETY,USE ONES
DESCRIBED IN PARTS LIST ONLY .
ATTENTION LES PIECES REPAREES PAR UN ETANT
DANGEREUSES AN POINT DE VUE SECURITE
N'UTILISER QUE CELLS DECRITES
DANS LA NOMENCLATURE DES PIECES

CAUTION: DIGITAL TRANSISTOR

PCB240
CEJ492

CONNECTOR SCHEMATIC DIAGRAM
(POWER PCB)



NOTE: THIS SCHEMATIC DIAGRAM IS THE LATEST AT THE TIME
OF PRINTING AND SUBJECT TO CHANGE WITHOUT NOTICE

NOTE: THE DC VOLTAGE AT EACH PART WAS MEASURED
WITH THE DIGITAL TESTER WHEN THE COLOR BROADCAST
WAS RECEIVED IN GOOD CONDITION AND PICTURE IS NORMAL.

PCB240
CEJ492